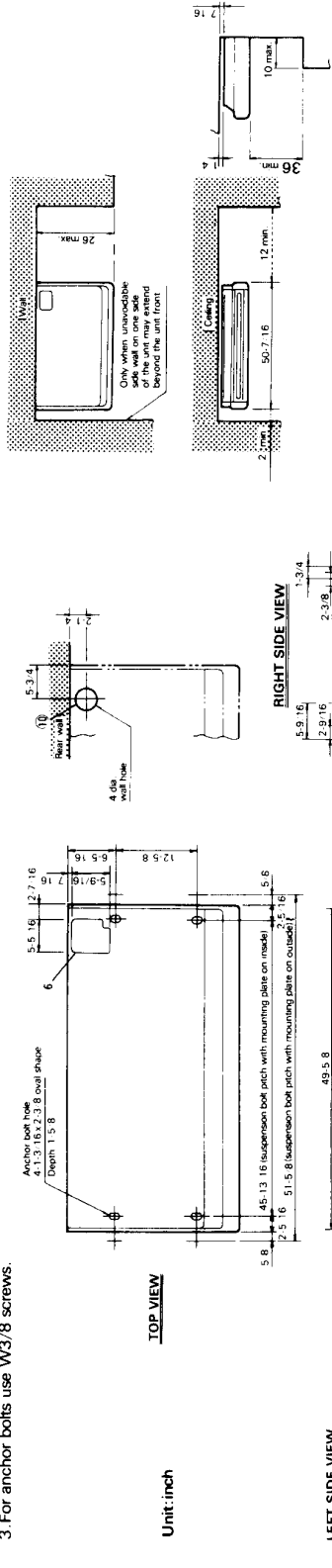


NOTES:

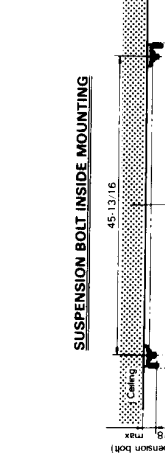
1. Allow dimensions for protruded architectural members on ceiling.
2. For drainage piping use VP20 (OD11) PVC pipes.
3. For anchor bolts use W3/8 screws.

Unit: inch

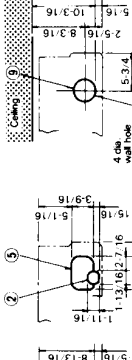


For workability and safety of suspension work, leave as much space as possible between one side of the unit and wall. Space required for bottom and right hand side for piping and wiring maintenance are shown above.

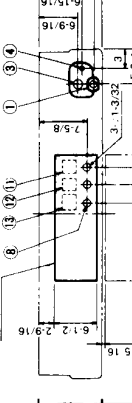
SERVICE SPACE REQUIRED AROUND INDOOR UNIT



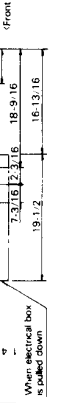
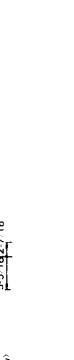
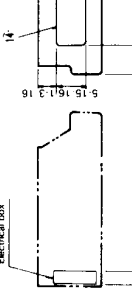
UPPER PIPING ARRANGEMENT POSITION



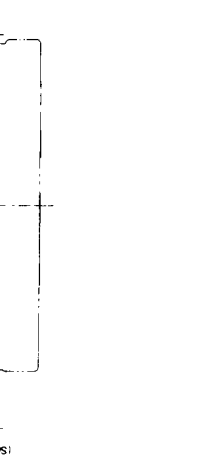
KNOCK OUT HOLE POSITION FOR REAR PIPING



HOLE POSITION FOR REAR PIPING



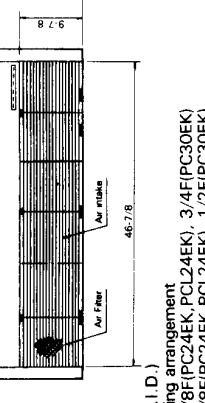
TOP VIEW



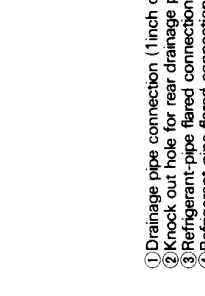
FRONT VIEW



LEFT SIDE VIEW



RIGHT SIDE VIEW



UPPER PIPING ARRANGEMENT POSITION



KNOCK OUT HOLE POSITION FOR REAR PIPING



HOLE POSITION FOR REAR PIPING



SUSPENSION BOLT INSIDE MOUNTING

SUSPENSION BOLT OUTSIDE MOUNTING

TOP VIEW

FRONT VIEW

LEFT SIDE VIEW

RIGHT SIDE VIEW

UPPER PIPING ARRANGEMENT POSITION

KNOCK OUT HOLE POSITION FOR REAR PIPING

HOLE POSITION FOR REAR PIPING

SUSPENSION BOLT INSIDE MOUNTING

SUSPENSION BOLT OUTSIDE MOUNTING

TOP VIEW

FRONT VIEW

LEFT SIDE VIEW

RIGHT SIDE VIEW

UPPER PIPING ARRANGEMENT POSITION

KNOCK OUT HOLE POSITION FOR REAR PIPING

HOLE POSITION FOR REAR PIPING

SUSPENSION BOLT INSIDE MOUNTING

SUSPENSION BOLT OUTSIDE MOUNTING

TOP VIEW

FRONT VIEW

LEFT SIDE VIEW

RIGHT SIDE VIEW

UPPER PIPING ARRANGEMENT POSITION

KNOCK OUT HOLE POSITION FOR REAR PIPING

HOLE POSITION FOR REAR PIPING

SUSPENSION BOLT INSIDE MOUNTING

SUSPENSION BOLT OUTSIDE MOUNTING

TOP VIEW

FRONT VIEW

LEFT SIDE VIEW

RIGHT SIDE VIEW

UPPER PIPING ARRANGEMENT POSITION

KNOCK OUT HOLE POSITION FOR REAR PIPING

HOLE POSITION FOR REAR PIPING

SUSPENSION BOLT INSIDE MOUNTING

SUSPENSION BOLT OUTSIDE MOUNTING

TOP VIEW

FRONT VIEW

LEFT SIDE VIEW

RIGHT SIDE VIEW

UPPER PIPING ARRANGEMENT POSITION

KNOCK OUT HOLE POSITION FOR REAR PIPING

HOLE POSITION FOR REAR PIPING

SUSPENSION BOLT INSIDE MOUNTING

SUSPENSION BOLT OUTSIDE MOUNTING

TOP VIEW

FRONT VIEW

LEFT SIDE VIEW

RIGHT SIDE VIEW

UPPER PIPING ARRANGEMENT POSITION

KNOCK OUT HOLE POSITION FOR REAR PIPING

HOLE POSITION FOR REAR PIPING

SUSPENSION BOLT INSIDE MOUNTING

SUSPENSION BOLT OUTSIDE MOUNTING

TOP VIEW

FRONT VIEW

LEFT SIDE VIEW

RIGHT SIDE VIEW

UPPER PIPING ARRANGEMENT POSITION

KNOCK OUT HOLE POSITION FOR REAR PIPING

HOLE POSITION FOR REAR PIPING

SUSPENSION BOLT INSIDE MOUNTING

SUSPENSION BOLT OUTSIDE MOUNTING

TOP VIEW

FRONT VIEW

LEFT SIDE VIEW

RIGHT SIDE VIEW

UPPER PIPING ARRANGEMENT POSITION

KNOCK OUT HOLE POSITION FOR REAR PIPING

MODELS : PC24/30/36/42EK,PCL24EK

| Item | | Model | PC24EK PCL24EK | PC30EK | PC36EK | PC42EK |
|--|---------------|-------|--|-------------------|-------------------|--------------------|
| Capacity | * 1 | Btu/h | 24,000 | 31,000 | 36,500 | 42,500 |
| Power consumption | * 1 | kW | 2.43 | 3.10 | 3.80 | 4.40 |
| EER | * 1 | | 9.9 | 10.0 | 9.6 | 9.7 |
| SEER | | | 10.3 | 10.4 | 10.2 | 10.0 |
| INDOOR UNIT MODEL | | | PC24EK PCL24EK | PC30EK | PC36EK | PC42EK |
| External finish | | | Munsell 2.5Y 8/0.3 & N2 | | | |
| Power supply | V,Phase,Hz | | 115,1,60 | | | |
| Max. fuse size (time delay) | A | | 15 | 15 | 15 | 15 |
| Min ampacity | A | | 3.0 | 3.0 | 3.0 | 3.0 |
| Fan motor | F.L.A. | | 1.8 | 1.8 | 2.1 | 2.4 |
| Airflow Hi-Lo | Dry | CFM | 1,050-850 | 1,050-850 | 1,270-990 | 1,270-990 |
| | Wet | CFM | 900-730 | 900-730 | 1,100-860 | 1,100-860 |
| Moisture removal | Pints/h | | 7.2 | 9.6 | 11.1 | 12.6 |
| Sound level Hi-Lo | dB(A) | | 50-43 | 50-43 | 52-44 | 52-44 |
| Cond. drain connection OD | in. | | 1 | 1 | 1 | 1 |
| Dimensions | W | in. | 50-7/16 | | 62-1/4 | |
| | D | in. | 26-13/16 | | 26-13/16 | |
| | H | in. | 10-1/8 | | 10-1/8 | |
| Weight | lb. | | 93 | | 115 | |
| OUTDOOR UNIT MODEL | | | PU24EK, PU24EK-1 PUL24EK, PUL24EK-1 | PU30EK, PU30EK-1 | PU36EK, PU36EK-1 | PU42EK2, PU42EK2-1 |
| External finish | | | Munsell 5Y7/1 | | | |
| Power supply | V,phase,Hz | | 208/230,1,60 | | | |
| Max. fuse size (time delay) | A | | 20 | 30 | 30 | 40 |
| Min. ampacity | A | | 16 | 20 | 22 | 27 |
| Fan motor | F.L.A. | | 0.65+0.65 | 0.65+0.65 | 0.75+0.75 | 0.8+0.8 |
| Compressor | Model | | NH33NBD | NH41NAD | NH47NAD | NH569NXA |
| | R.L.A. | | 11.5 | 14.0 | 17.5 | 20 |
| | L.R.A. | | 54 | 73 | 87 | 105 |
| Crankcase heater | A(W) | | 0.16/0.17 (33/39) | 0.16/0.17 (33/39) | 0.16/0.17 (33/39) | 0.16/0.17 (33/39) |
| Refrigerant control | | | Capillary tube | | | |
| Sound level | dB(A) | | 55 | 55 | 55 | 56 |
| Dimensions | W | in. | 33-1/4 | | 38-3/16 | |
| | D | in. | 11-5/8 | | 13-9/16 | |
| | H | in. | 49-9/16 | | 49-9/16 | |
| Weight | lb. | | 207 | 208 | 220 | 260 |
| REMOTE CONTROLLER | | | With indoor unit | | | |
| Control volage (by built-in transformer) | | | Indoor unit - remote controler : DC12V, Indoor unit - outdoor unit : DC12V | | | |
| REFRIGERANT PIPING | | | Not supplied (optional parts) | | | |
| Pipe size | Liquid | in. | 3/8 | 1/2 | | |
| | Gas | in. | 5/8 | 3/4 | | |
| Connection method | Indoors | | Flared | | | |
| | Outdoors | | Flared | | | |
| Between the indoor & outdoor units | Height | ft | 164 | | | |
| | Piping length | ft. | 164 | | | |

NOTE : * 1. Rating conditions – indoor : 80 FDB, 67 FWB outdoor : 95 FDB, 75 FWB

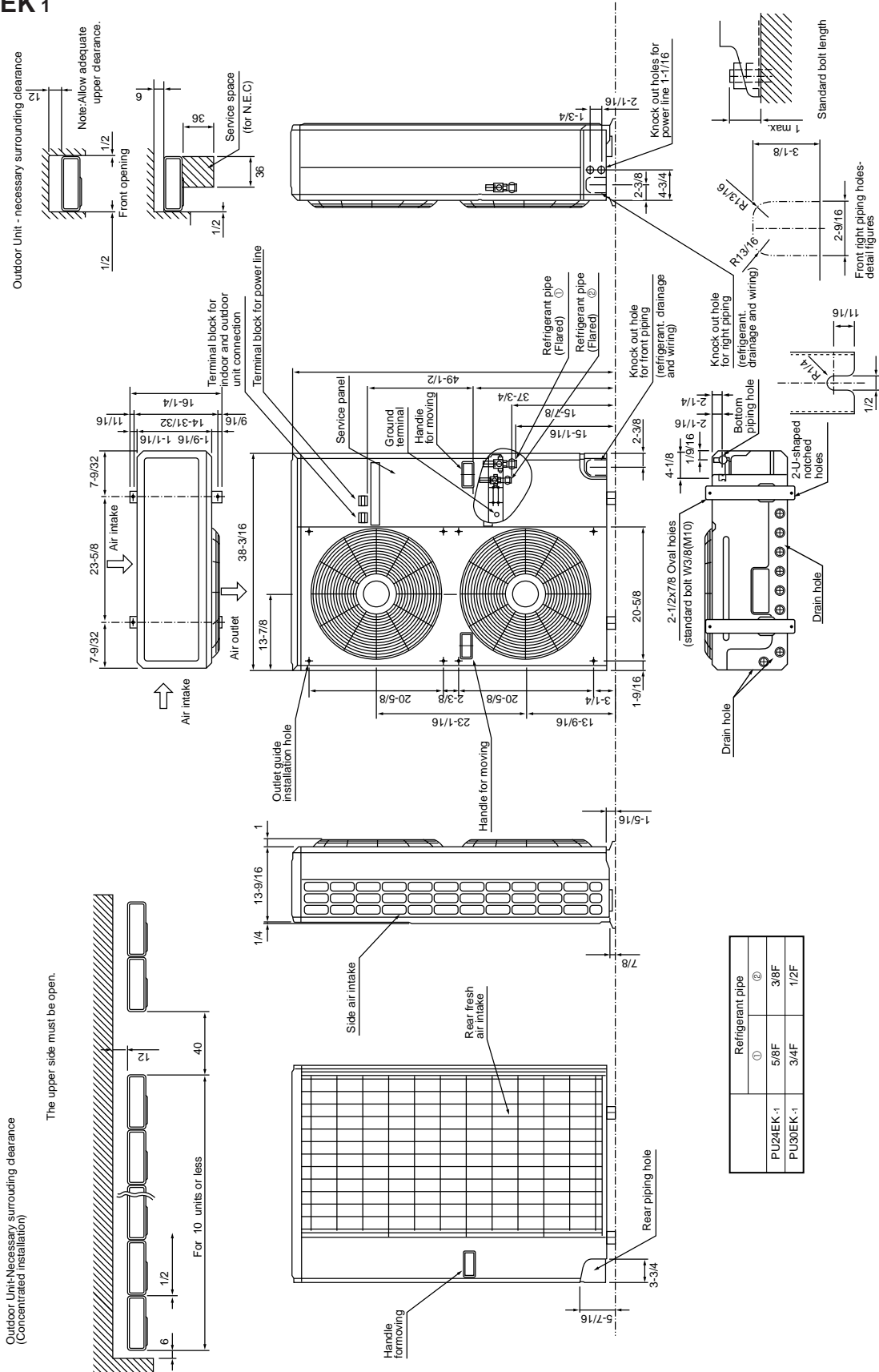
Operating range

| | | Indoor intake air temperature | Outdoor intake air temperature | |
|---------|---------|-------------------------------|--------------------------------|-------------|
| Cooling | Maximum | 95 FDB, 71 FWB | 115 FDB | |
| | Minimum | 67 FDB, 57 FWB | *PC: 0°FDB | *PCL: 0°FDB |

*WITH WIND BAFFLE INSTALLED

Outdoor Unit PU24/30EK 1

Unit : inch



| | Refrigerant pipe | | |
|----------|------------------|------|------|
| | ① | ② | ③ |
| PU24EK-1 | 5/8F | 3/8F | 1/2F |
| PU30EK-1 | 3/4F | 1/2F | |

Outdoor unit PU36EK, PU42EK2, PU36EK-1, PU42EK2-1

Unit : inch

