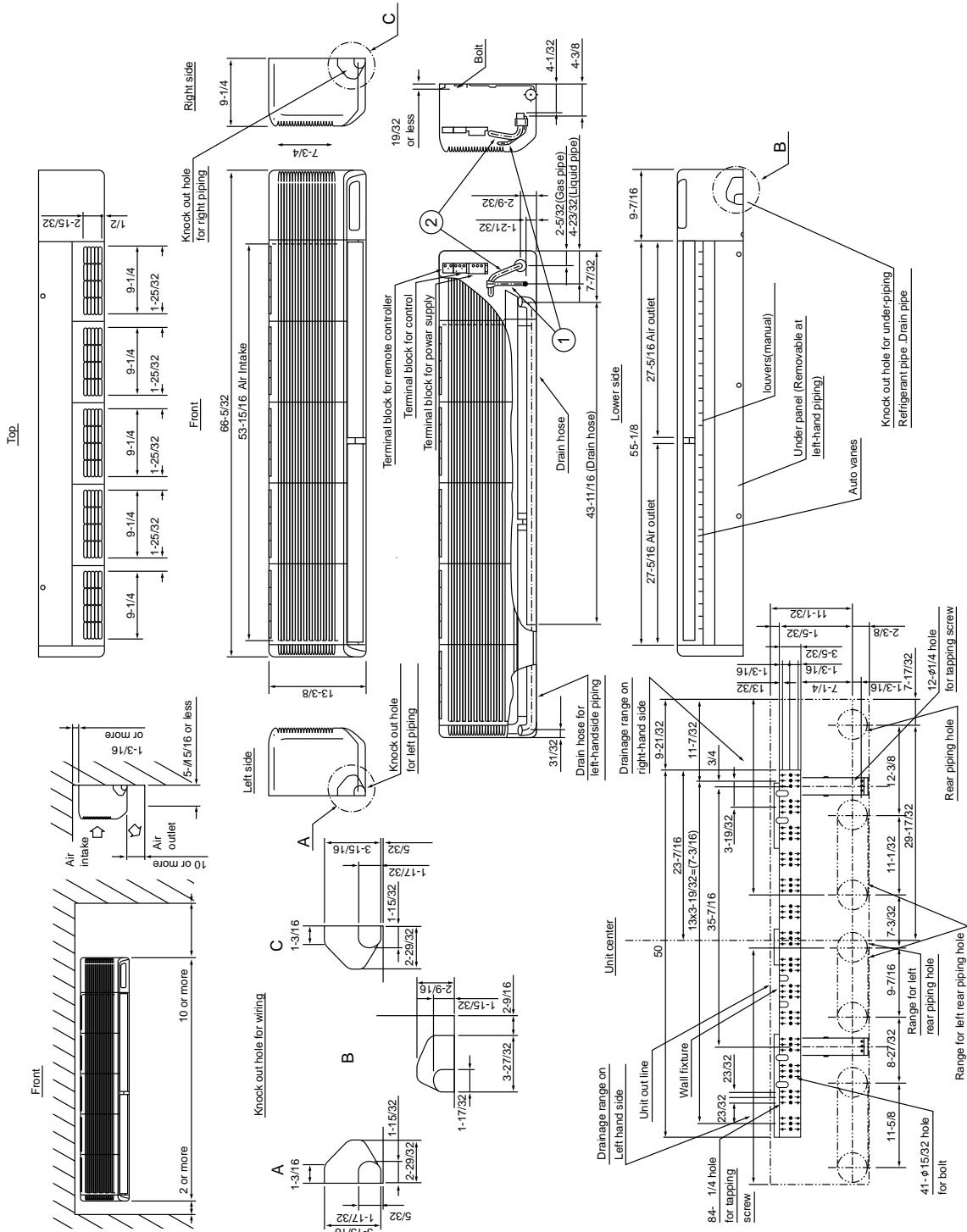


PKH 30/36FK

Unit : mm(inch)



①	Liquid pipe	1/2F
②	Gas pipe	3/4F

Sleeve × 1	Through hole
φ 3-1/2	φ 3-1/2- φ 4
× 1	Sleeves are available on the market.

4. STANDARD OPERATION DATA

Models			PKH18FK		PKH24FK		PKH30FK		PKH36FK		
Item		Unit	Cooling	Heating	Cooling	Heating	Cooling	Heating	Cooling	Heating	
Electrical circuit	Voltage	V	208/230	208/230	208/230	208/230	208/230	208/230	208/230	208/230	
	Frequency	Hz	60		60		60		60		
	Total input	kW	1.79	1.56	2.36	2.37	3.12	3.02	3.44	3.54	
	Indoor fan current	A	0.5	0.5	0.5	0.5	0.5	0.5	0.5	0.5	
	Booster heater current	A	—	7.6/8.4	—	7.6/8.4	—	7.6/8.4	—	8.7/9.6	
	Outdoor fan current	A	0.75	0.75	0.65+0.65	0.65+0.65	0.75+0.75	0.75+0.75	0.75+0.75	0.75+0.75	
	Comp. current	A	7.4/6.9	6.1/5.9	9.3/8.7	9.5/8.7	12.6/11.8	12.2/11.4	14.3/13.2	14.7/13.7	
Refrigerant circuit	Condensing pressure	psi.G	255	202	240	243	245	236	243	263	
	Suction pressure	psi.G	81	61	75	63	80	60	74	60	
	Discharge temperature	°F	182	126	158	149	158	159	160	170	
	Condensing temperature	°F	118	102	115	115	115	113	115	120	
	Suction temperature	°F	66	34	46	35	49	32	45	33	
	Comp.shell bottom temperature	°F	171	111	141	126	138	130	142	148	
	Ref. pipe length	ft			25		25		25		
	Refrigerant charge	—	5 lbs 8 oz		9 lbs 15 oz		10 lbs 2 oz		10 lbs 9 oz		
Indoor side	Intake air temperature	DB	°F	80	70	80	70	80	70	80	70
		WB	°F	67	60	67	60	67	60	67	60
	Discharge air temperature	DB	°F	61	96	58	105	59	103	58	109
		WB	°F	59	68	56	70	58	70	56	71
	Fan speed	r.p.m.	1,490		1,490		1,490		1,490		
	Airflow (High)	CFM	710		710		990		990		
Outdoor side	Intake air temperature	DB	°F	95	47	95	47	95	47	95	47
		WB	°F	75	43	75	43	75	43	75	43
	Fan speed upper/lower	r.p.m.	790		750/750		760/760		760/760		
	Airflow	CFM	1,590		3,170		3,350		3,350		
Capacity	Btu/h	18,000	18,600	24,000	25,000	30,000	33,000	34,100	38,000		
SHF	—	0.82	—	0.71	—	0.75	—	0.71	—		

