

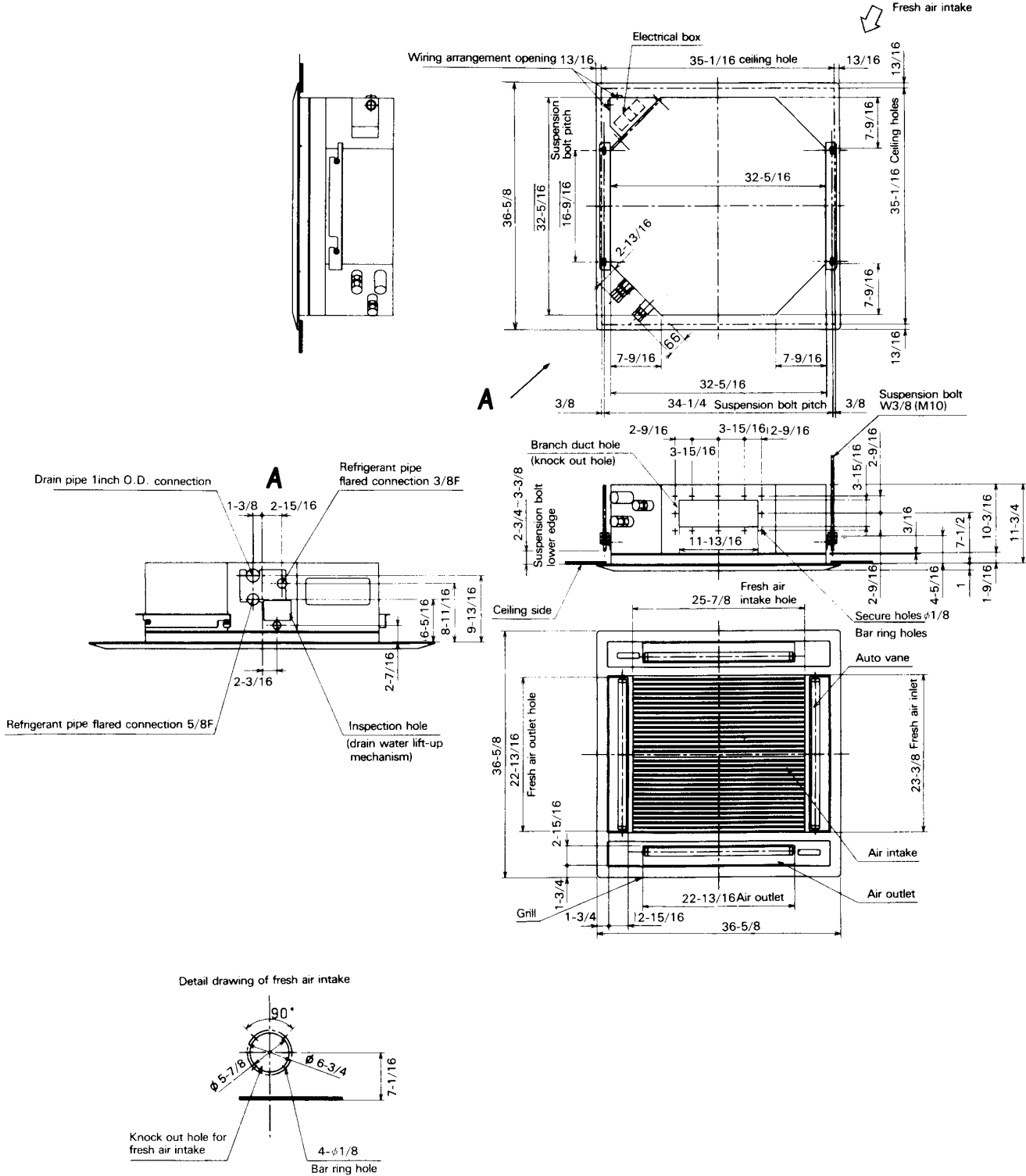
5 OUTLINES AND DIMENSIONS

5.1 Indoor unit PL18/24FK2, PLL12/18/24FK

Unit : inch

Note

1. For drainage piping use PVC pipe 1 inch O.D.
2. For suspension bolts use W3/8 or M10 screws. (Actual arrangement)
3. Figure 35-1/16 * 35-1/16 ceiling holes are standard but the ceiling holes for 33-7/8 * 33-7/8 can also be installed. In this case, the installation and service are a little more difficult.

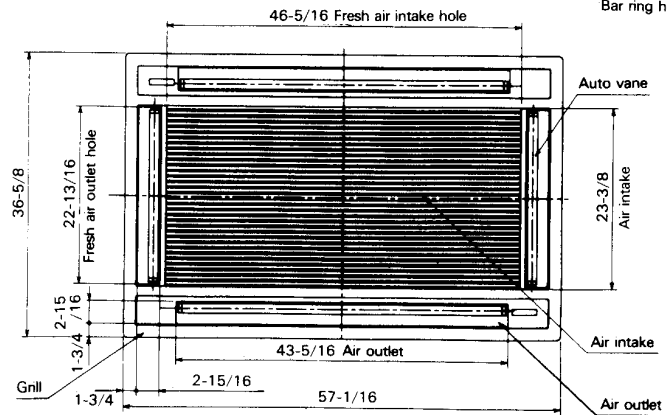
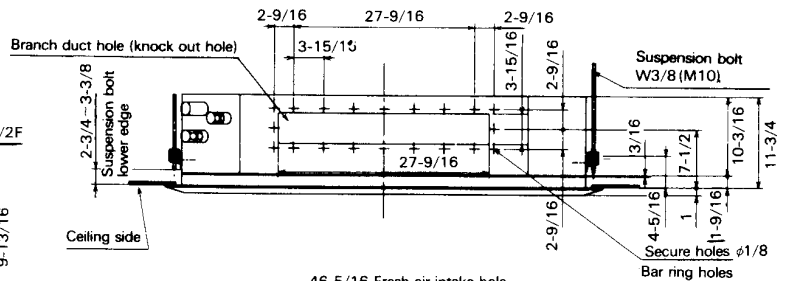
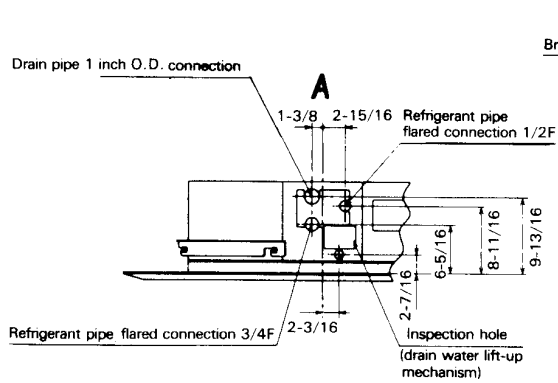
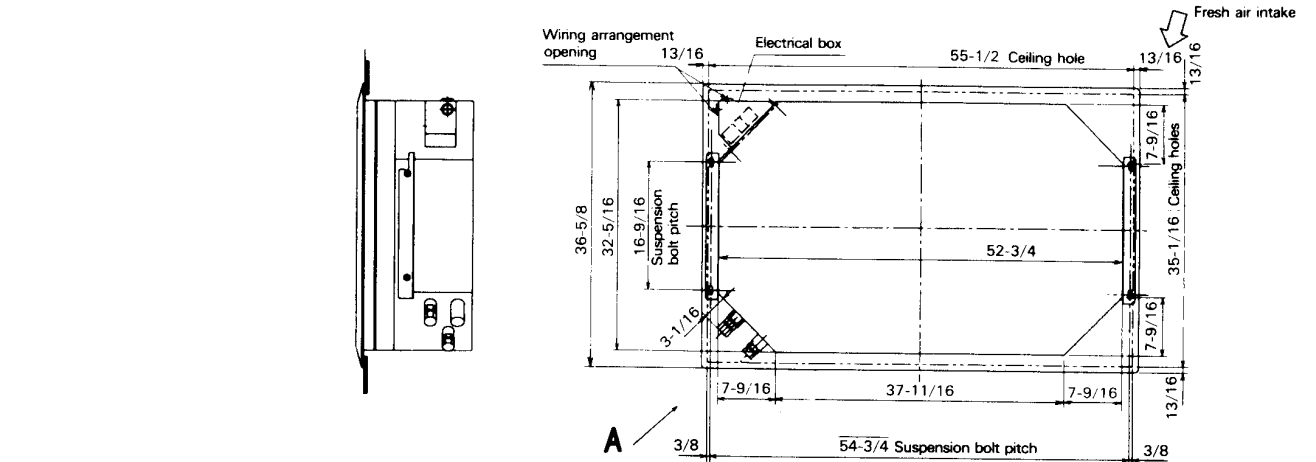


Indoor unit PL30/36/42FK2

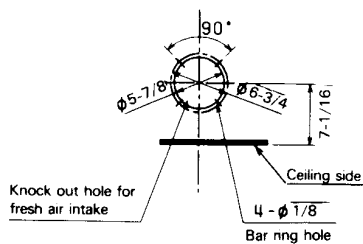
Unit : inch

Note

1. For drainage piping use PVC pipe 1 inch O.D.
2. For suspension bolts use W3/8 or M10 screws. (Actual arrangement)
3. Figure 35-1/16 * 55-1/2 ceiling holes are standard but the ceiling holes for 33-7/8 * 54-5/16 can also be installed. In this case, the installation and service are slightly more difficult.



Detail drawing of fresh air intake



3

SPECIFICATIONS

MODELS : PL18/24FK, PLL12/18/24FK

Item		Model	PLL12FK	PL18FK PLL18FK	PL24FK PLL24FK
Capacity	* 1	Btu/h	12,300	18,400	23,600
Power consumption	* 1	kW	1.23	1.88	2.48
EER	* 1		10.0	9.8	9.5
SEER			10.4	10.2	10.0
INDOOR UNIT MODEL			PLL12FK	PL18FK2, PLL18FK	PL24FK2, PLL24FK
External finish			Galvanized sheets with gray heat insulaiton		
Power supply		V, phase, Hz	115, 1, 60		
Max. fuse size (time delay)		A	15	15	15
Min. ampacity		A	2.0	2.0	2.0
Fan motor		F.L.A.	0.75	0.85	1.1
Airflow Hi-Lo	Dry	CFM	570-540	680-460	750-550
	Wet	CFM	420-400	650-440	660-480
Moisture removal		Pints/h	3.8	5.3	6.8
Sound level Hi-Lo		dB(A)	43-35	45-38	47-39
Cond. drain connection OD		in.	1-1/4	1-1/4	1-1/4
Dimensions	W	in.	32-1/4		
	D	in.	32-1/4		
	H	in.	10-1/8		
Weight		lb.	60	64	64
INDOOR GRILLE	External finish		Munsell 0.70Y 8.59/0.97		
	Dimensions	W	in.	36-5/8	
		D	in.	36-5/8	
		H	in.	2-3/8	
Weight			22		
OUTDOOR UNIT MODEL			PUL12EK, PUL12EK-1	PU18EK, PU18EK-1 PUL18EK, PUL18EK-1	PU24EK, PU24EK-1 PUL24EK, PUL24EK-1
External finish			Munsell 5Y 7/1		
Sound level		dB(A)	50	53	55
Power supply		V, phase, Hz	208-230, 1, 60		
Max. fuse size (time delay)		A	15	20	20
Min. ampacity		A	11	16	16
Fan motor		F.L.A.	0.65	0.75	0.65 + 0.65
Compressor	Model (type)		RH167NAB	RH247NAB	NH33NBD
		R.L.A.	8.9	12	11.5
		L.R.A.	29	37	54
Crankcase heater		A(W)	0.11/0.12(23/28)	0.11/0.12 (23/28)	0.16/0.17 (33/39)
Refrigerant control			Capillary tube		
Dimensions	W	in.	34-1/4		
	D	in.	11-5/8		
	H	in.	25-5/8	33-1/2	49-9/16
Weight		lb.	105	154	207
REMOTE CONTROLLER			With indoor unit		
Control voltage (by built-in transformer)			Indoor unit - remote controller : DC12V, Indoor unit - outdoor unit : DC12V		
REFRIGERANT PIPING			Not supplied (optional parts)		
Pipe size	Liquid	in.	3/8	3/8	3/8
	Gas	in.	5/8	5/8	5/8
Connection method	Indoors		Flared		
	Outdoors		Flared		
Between the indoor & outdoor units	Height difference	ft	130	130	164
	Piping length	ft	130	130	164

NOTE : * 1. Rating conditions — indoor : 80°FDB, 67°FWB outdoor : 95°FDB, 75°FWB

Operating range

		Indoor intake air temperature	Outdoor intake air temperature	
Cooling	Maximum	95°FDB, 71°FWB	115°FDB	
	Minimum	67°FDB, 57°FWB	*PL: 0°FDB	*PLL: 0°FDB

*WITH WIND BAFFLE INSTALLED

MODELS : PL30/36/42FK(2)

Item		Model	PL30FK	PL36FK	PL42FK2
Capacity	* 1	Btu/h	31,000	36,100	42,500
Power consumption	* 1	kW	3.10	3.76	4.40
EER	* 1		10.0	9.6	9.7
SEER			10.4	10.0	10.0
INDOOR UNIT MODELS			PL30FK2	PL36FK2	PL42FK2
External finish			Galvanized sheets with gray heat insulation		
Power supply		V, phase, Hz	115, 1, 60		
Max. fuse size (time delay)		A	15	15	15
Min. ampacity		A	2.0	2.0	3.0
Fan motor		F.L.A.	1.0 + 1.0	1.0 + 1.0	1.2 + 1.2
Airflow Hi-Lo	Dry	CFM	1,170-850	1,170-850	1,270-920
	Wet	CFM	1,090-790	1,090-790	1,200-870
Moisture removal		(Pints/h)	9.6	10.9	12.6
Sound level Hi-Lo		dB(A)	49-41	49-41	49-42
Cond. drain connection OD		in.	1-1/4	1-1/4	1-1/4
Dimensions	W	in.	52-3/4		
	D	in.	32-1/4		
	H	in.	10-1/8		
Weight		lb.	99	99	101
INDOOR GRILLE	External finish		Munsell 0.70Y 8.59/0.97		
	Dimensions	W	in.	57-1/8	
		D	in.	36-5/8	
		H	in.	2-3/8	
Weight			35		
OUTDOOR UNIT MODEL			PU30EK, PU30EK-1	PU36EK, PU36EK-1	PU42EK2, PU42EK2-1
External finish			Munsell 5Y 7/1		
Sound level		dB(A)	55	55	56
Power supply		V, phase, Hz	208-230, 1, 60		
Max. fuse size (time delay)		A	30	30	40
Min. ampacity		A	20	22	27
Fan motor		F.L.A.	0.65 + 0.65	0.75 + 0.75	0.8 + 0.8
Compressor	Model(type)		NH41NAD	NH47NAD	NH569NXA
		R.L.A.	14.0	17.5	20
		L.R.A.	73	87	105
Crankcase heater		A(W)	0.16/0.17 (33/39)	0.16/0.17 (33/39)	0.16/0.17 (33/39)
Refrigerant control			Capillary tube		
Dimensions	W	in.	34-1/4	38-3/16	38-3/16
	D	in.	11-5/8	13-9/16	13-9/16
	H	in.	49-9/16		
Weight		lb.	208	220	260
REMOTE CONTROLLER			With indoor unit		
Control voltage (by built-in transformer)			Indoor unit - remote controller : DC12V, Indoor unit - outdoor unit : DC12V		
REFRIGERANT PIPING			Not supplied (optional parts)		
Pipe size	Liquid	in.	1/2	1/2	1/2
	Gas	in.	3/4	3/4	3/4
Connection method	Indoors		Flared		
	Outdoors		Flared		
Between the indoor & outdoor units	Height difference	ft	164	164	164
	Piping length	ft	164	164	164

NOTES : * 1. Rating conditions — indoor : 80°FDB, 67°FWB outdoor : 95°FDB, 75°FWB

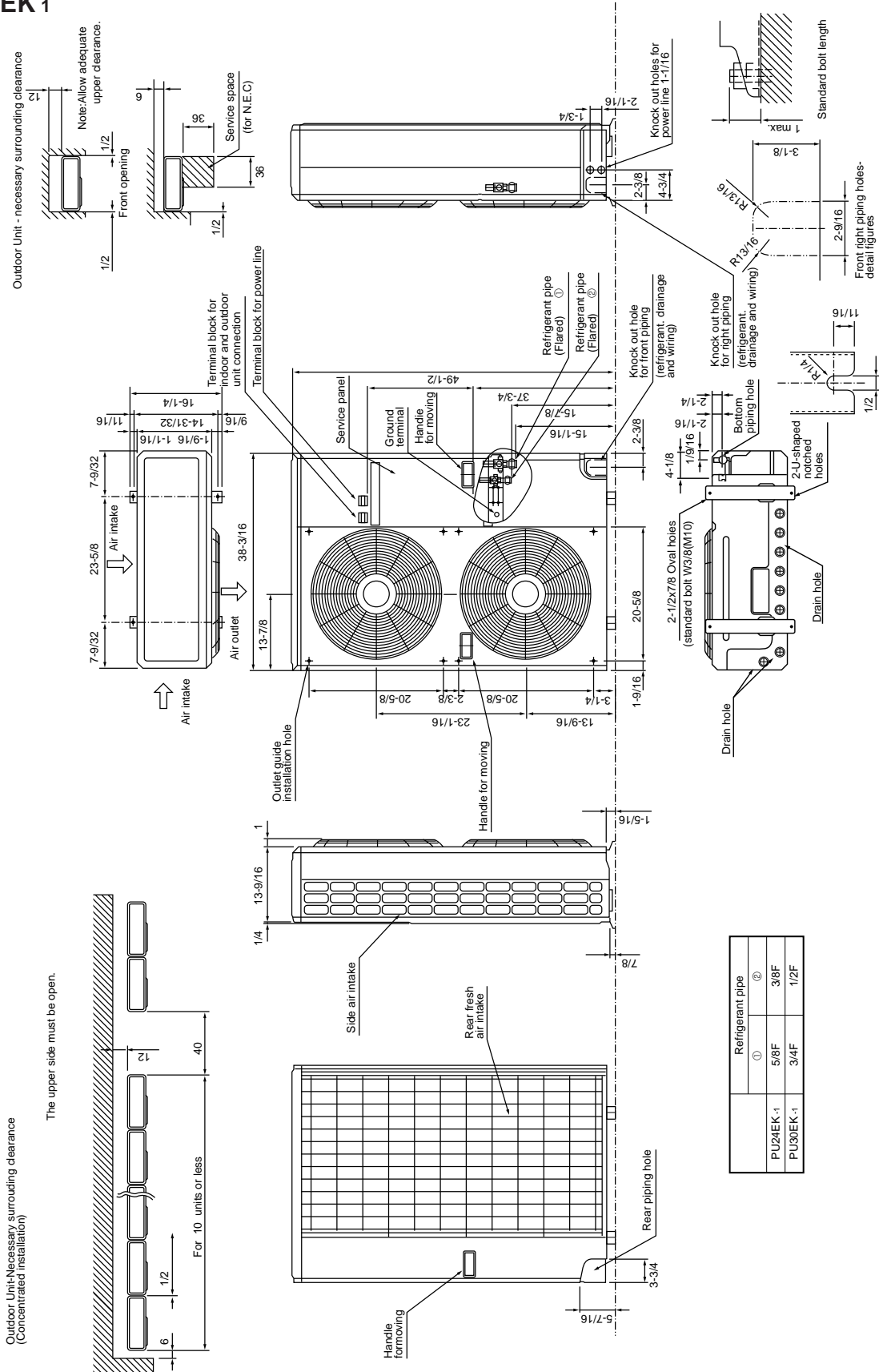
Operating range

Cooling	Indoor intake air temperature		Outdoor intake air temperature
	Maximum	95°FDB, 71°FWB	115°FDB
Minimum	67°FDB, 57°FWB	*PL: 0°FDB	

*WITH WIND BAFFLE INSTALLED

Outdoor Unit PU24/30EK 1

Unit : inch



	Refrigerant pipe	
	①	②
PU24EK-1	5/8F	3/8F
PU30EK-1	3/4F	1/2F

