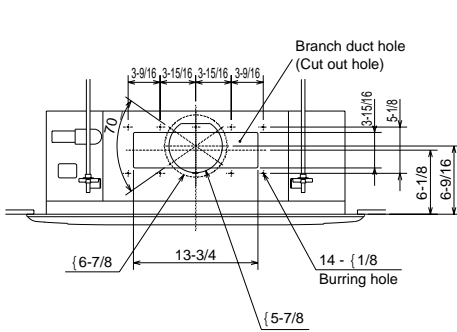


5

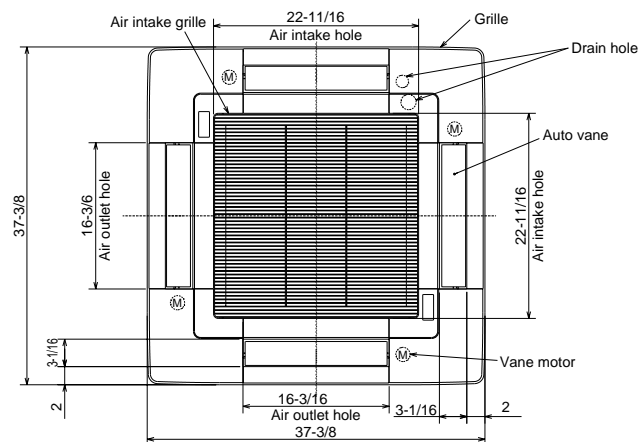
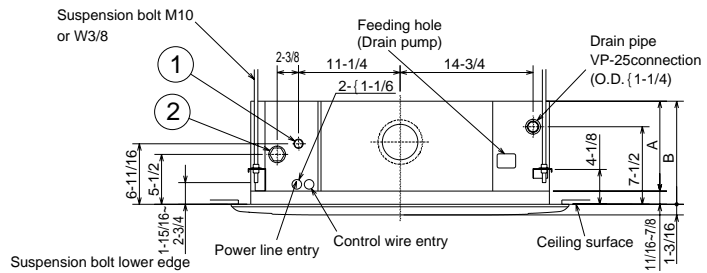
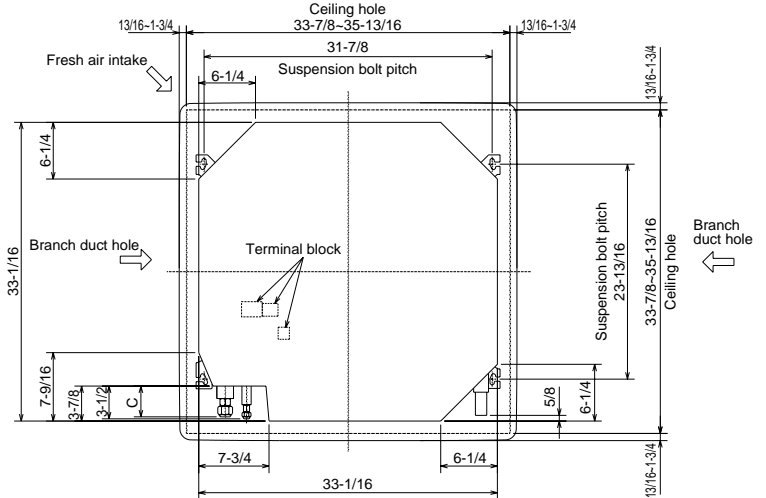
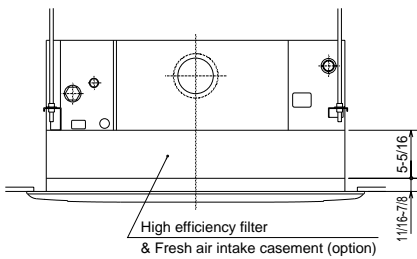
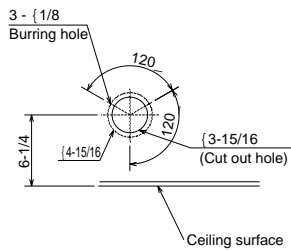
OUTLINES AND DIMENSIONS

1. INDOOR UNIT PLH18AK , PLH24AK , PLH30AK , PLH36AK , PLH42AK

Unit : inch



Detail drawing of fresh air intake



Models	1	2	A	B	C
PLH18AK	Refrigerant pipe flared connection 3/8F	Refrigerant pipe flared connection 5/8F	9-1/2	10-3/16	3-1/8
PLH24AK					
PLH30AK	Refrigerant pipe flared connection 1/2F	Refrigerant pipe flared connection 3/4F [42AK:7/8F]	11-1/16	11-3/4	3-5/16
PLH36AK					
PLH42AK					

3

SPECIFICATIONS

MODELS : PLH18/24/30/36/42AK

Item		Model	PLH18AK	PLH24AK	PLH30AK	PLH36AK	PLH42AK
Capacity	Cooling *1	Btu/h	18,000	24,000	30,000	35,400	42,000
	Heating *1, *3	Btu/h	19,000(24,500/25,500)	26,000(31,500/32,500)	33,000(39,500/41,200)	38,000(45,900/47,600)	44,300(52,200/53,900)
	Heating *2, *3	Btu/h	11,000(16,500/17,500)	16,500(22,000/23,000)	18,500(25,000/26,700)	23,000(30,900/32,600)	26,800(34,700/36,400)
Moisture removal		Pints/h	5.3	7.0	9.1	10.9	12.3
Power Consumption	Cooling *1	kW	1.75	2.57	3.17	3.63	3.98
	Heating *1, *3	kW	1.59(3.19/3.49)	2.51(4.11/4.41)	3.04(4.94/5.44)	3.45(5.75/6.25)	3.82(6.12/6.62)
	Heating *2, *3	kW	1.32(2.92/3.22)	2.15(3.75/4.05)	2.55(4.45/4.95)	2.93(5.23/5.73)	3.24(5.54/6.04)
EER		*1	10.3	9.3	9.5	9.8	10.6
SEER			10.5	10.3	10.4	10.0	10.7
HSPF			7.2	7.0	6.9	7.1	7.0
COP		*1	3.5	3.0	3.2	3.2	3.4
		*2	2.4	2.2	2.1	2.3	2.4
INDOOR UNIT MODELS			PLH18AK	PLH24AK	PLH30AK	PLH36AK	PLH42AK
External finish			Galvanized sheets with gray heat insulation				
Power supply		V,phase,Hz	208/230,1,60				
Max.fuse size (time delay)		A	20		25		
Min.ampacity		A	15		17		
Fan motor		F.L.A.	0.7	1.2		1.4	
Booster heater		A(kW)	7.7/8.3(1.6/1.9)		9.1/10.4(1.9/2.4)		11.1/12.2(2.3/2.8)
Airflow Hi-Lo	Dry	CFM	710-530	990-710		1060-780	
	Wet	CFM	670-490	950-670		1020-740	
Sound level Hi-Lo		dB	37-31	41-33	43-35	45-37	
Unit drain pipe O.D.		in.	1-1/4				
Dimensions	W	in.	33-1/16				
	D	in.	33-1/16				
	H	in.	10-3/16	11-3/4			
Weight		lb	57	71		75	
INDOOR GRILLE	External finish		Munsell 0.7Y 8.59/0.97				
	Dimensions	W	37-3/8				
		D	37-3/8				
		H	1-3/16				
Weight		lb	11				
OUTDOOR UNIT MODELS			PUH18EK	PUH24EK	PUH30EK1	PUH36EK1	PUH42EK7

NOTES : *1.Rating conditions (cooling)-indoor : 80°FDB,67°F WB outdoor : 95°FDB,75°F WB.
 (heating)-indoor : 70°FDB,60°F WB outdoor : 47°FDB,43°F WB.
 *2.Rating conditions (heating)-indoor : 70°FDB,60°F WB outdoor : 17°FDB,15°F WB.
 *3.Heating capacity and Heating power consumption in () includes heater operation at 208/230V.

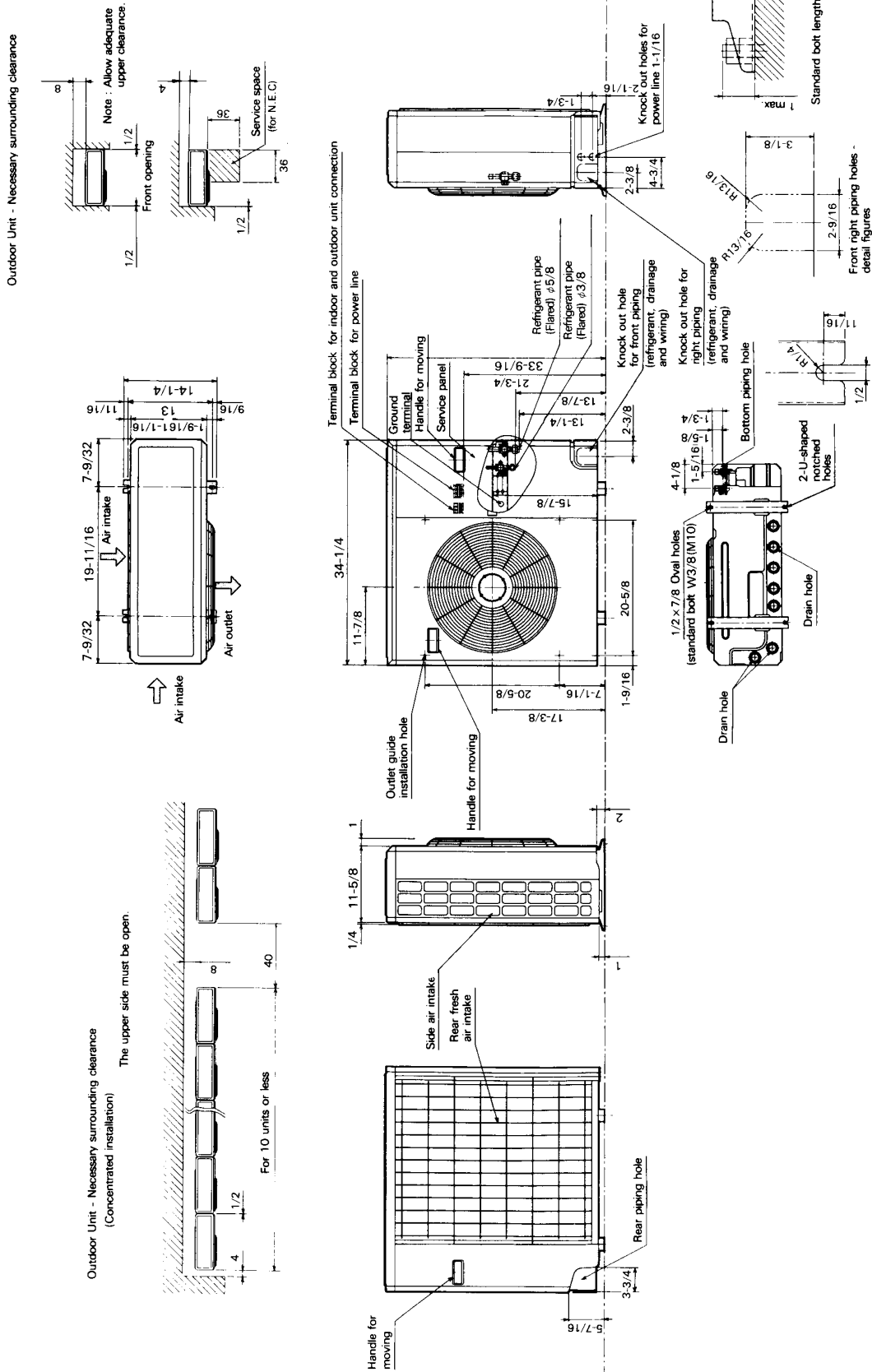
Operating range

		Indoor intake air temperature	Outdoor intake air temperature
Cooling	Maximum	95°FDB,71°F WB	115°FDB
	Minimum	67°FDB,57°F WB	0°FDB*
Heating	Maximum	80°FDB,67°F WB	75°FDB,65°F WB
	Minimum	70°FDB,60°F WB	17°FDB,15°F WB

* In case of the wind baffle is installed.
 (In case of the wind baffle is not installed, the minimum temperature will be 23°FDB.)

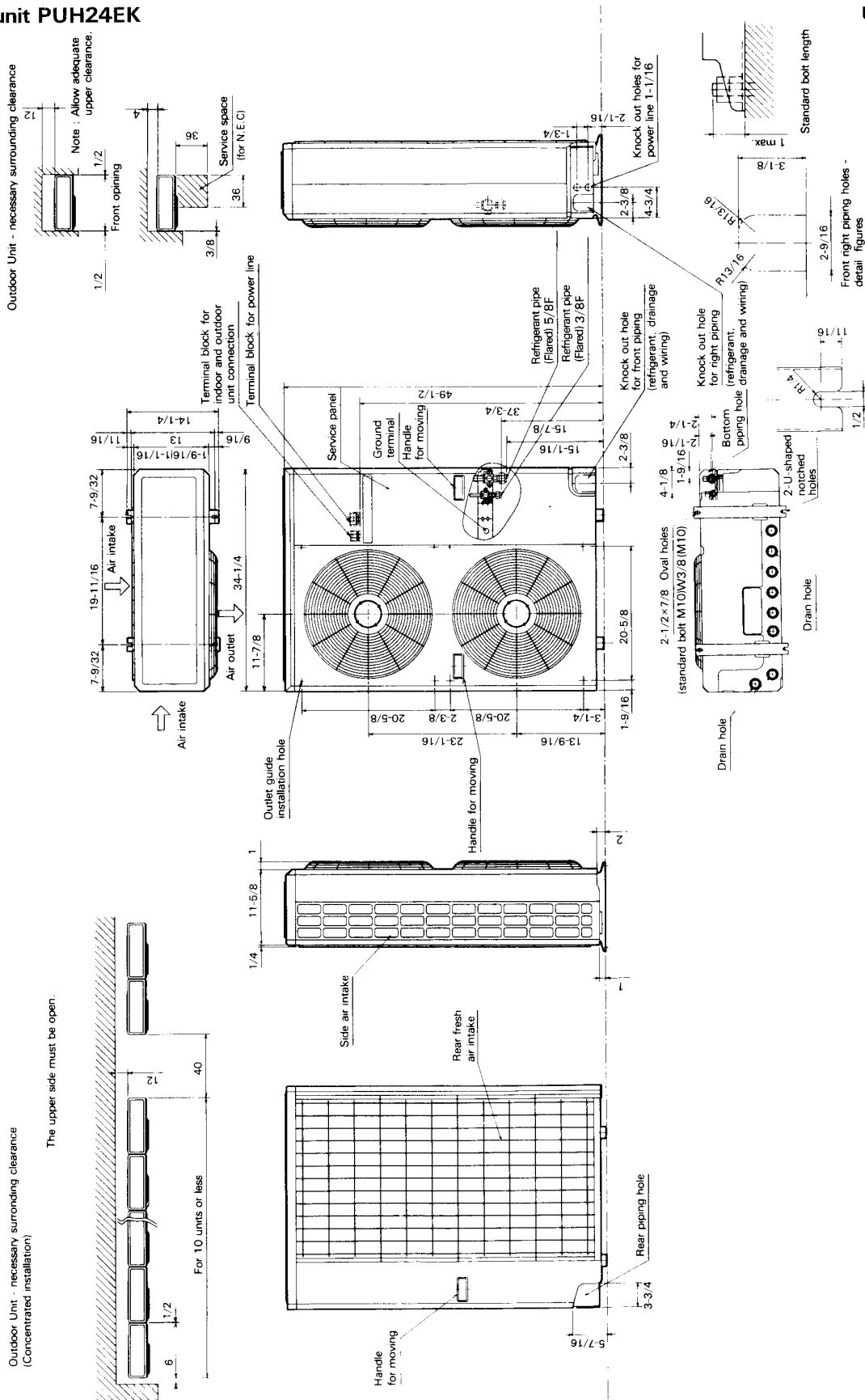
4.3 Outdoor unit PUH18EK

Unit : inch



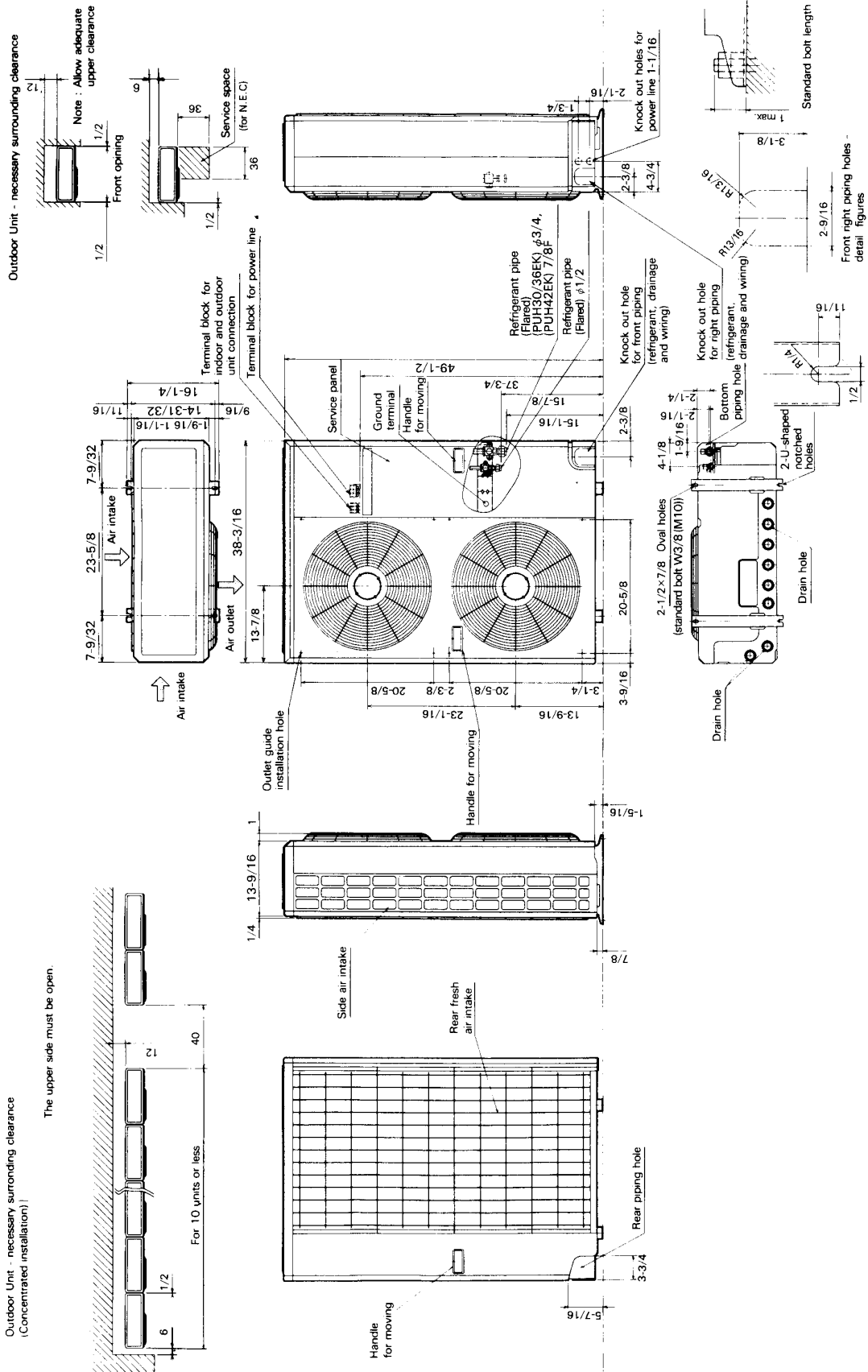
Outdoor unit PUH24EK

Unit : inch



Outdoor unit PUH30/36/42EK

Unit : inch



5

SPECIFICATIONS

MODELS : PUH18/24/30/36/42EK , PUH30/36/42EK₁

Model		PUH18EK	PUH24EK	PUH30EK	PUH36EK	PUH42EK
Item						
OUTDOOR UNIT MODELS		PUH18EK	PUH24EK	PUH30EK , PUH30EK₁	PUH36EK , PUH36EK₁	PUH42EK , PUH42EK₁
External finish		Munsell 5Y 7/1				
Power supply V,phase,Hz		208/230,1,60				
Max.fuse size (time delay) A		20	20	30	30	40
Min.ampacity A		16	16	20	22	27
Fan motor F.L.A.		0.75	0.65+0.65	0.75+0.75	0.75+0.75	0.8+0.8
Compressor	Model (type)	RH247NAB	NH33NBD	NH41NAD	NH47NAD	NH569NXA
	R.L.A.	12	11.5	14.0	17.5	20.0
	L.R.A.	37	54	73	87	105
Crankcase heater A(W)		0.11/0.12(23/28)	0.16/0.17(33/39)	0.16/0.17(33/39)	0.16/0.17(33/39)	0.16/0.17(33/39)
Refrigerant control		Capillary tube				
Defrost method		Reverse cycle				
Sound level dB		53	55	55	55	56
Dimensions	W	in. 34-1/4	34-1/4	38-3/16	38-3/16	38-3/16
	D	in. 11-5/8	11/5/8	13-9/16	13-9/16	13-9/16
	H	in. 33-1/2	49-9/16	49-9/16	49-9/16	49-9/16
Weight lb		131	202	245	246	268
Control voltage (by built-in transformer)		Indoor unit-outdoor unit:DC12V				
REFRIGERANT	Name	R22				
	Charge	5 lbs 8 oz	9 lbs 15 oz	10 lbs 2 oz	10 lbs 9 oz	12 lbs 9 oz
	Oil<Model> OZ	16<MS-56>	37<MS32(N-1)>	40<MS32(N-1)>	40<MS32(N-1)>	49<MS32(N-1)>
REFRIGERANT PIPING		Not supplied(optional parts)				
Pipe size	Liquid	in. 3/8	3/8	1/2	1/2	1/2
	Gas	in. 5/8	5/8	3/4	3/4	7/8
Connection method	Indoors	Flared				
	Outdoors	Flared				
Between the indoor & outdoor units	Height difference	ft Max. 130	Max. 164	Max. 164	Max. 164	Max. 164
	Piping length	ft Max. 130	Max. 164	Max. 164	Max. 164	Max. 164

Operating range

		Indoor intake air temperature	Outdoor intake air temperature
Cooling	Maximum	95°FDB,71°FWB	115°FDB
	Minimum	67°FDB,57°FWB	0°FDB*
Heating	Maximum	80°FDB,67°FWB	75°FDB,65°FWB
	Minimum	70°FDB,68°FWB	17°FDB,15°FWB

* In case of the wind baffle installed.
(In case of the wind baffle is not installed , the minimum temperature will be 23°FDB.)