

stylus™...

...a product you've grown to trust!

Trane is proud to present its complete line of convertible mini-split air conditioners. Designed with your needs in mind, the STYLUS line of mini-splits is sure to fit almost any new or replacement application.

Flexibility:

- Convertible installation in either the CEILING, FLOOR or LOW WALL position.

Comfort:

- **Air Sweep** (12, 18 and 24 MBh models) - choose one of four air flow directions, or select sweep to cover larger area automatically.

User Friendly:

- **Wireless Remote Control** provides flexibility and convenience with the following features:
 - **System Timer** - preset system operation with 9 hour programmable timer.
 - **Sleep Mode** - automatic, energy efficient temperature adjustment for increased comfort (and savings!) while you sleep.
 - **Optional Electric Heater** - for better selection of the right unit to meet your needs.
 - **Emergency Override** - in the event the remote control is lost or the battery expires, the last temperature setting entered is maintained; allows for operation of the unit without the remote control.

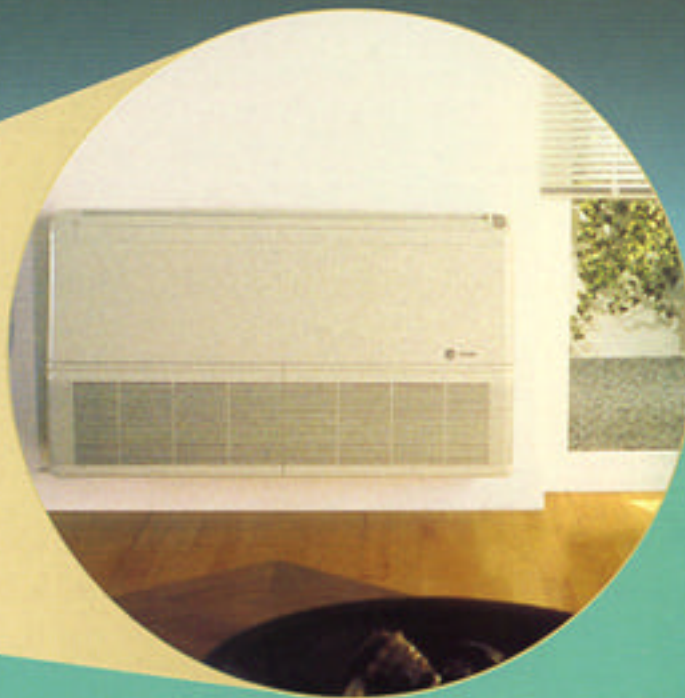
Quality:

- All major components are individually inspected and tested, and every unit undergoes a run-test before shipping from the factory.

Reliability:

- The three minute time delay provides built-in protection against power interruptions and rapid compressor cycling which could harm the air conditioning system.

**Convertible Mini-Split
Air Conditioners
MCX Series, 50 & 60 Hz
12,000 to 36,000 Btu/h**



Specifications: 220-240/1/50 or 200-240/1/60

Model	Nominal Cooling Capacity		Airflow		Height		Uncrated Dimensions Width		Depth		Weight	
	MBH	kW	CFM	CMH	inches	mm	inches	mm	inches	mm	lb	kg
MCX512E	12.0	3.5	400	680	24.7	627	42.7	1085	9.6	243	73	33
MCX518E	18.0	5.3	475	808	24.7	627	42.7	1085	9.6	243	79	35
MCX524E	24.0	7.0	675	1148	24.7	627	52.6	1335	10.5	268	90	41
MCX536E	36.0	10.5	915	1556	24.7	627	62.4	1585	10.5	268	125	57

We recommend system matches with a Trane high efficiency condensing unit.

stylus™ ...

...is now available in three exciting, new sizes...

**Convertible Mini-Split
Air Conditioners
MCX Series, 50 & 60 Hz
42,000 to 60,000 Btu/h**

The quality you have come to expect from Trane, continues with the addition of the 3 1/2, 4 and 5 ton models to the existing Trane STYLUS product line.

The benefits of a mini-split system have been extended to a broader range of sizes, making STYLUS the perfect solution for your new or replacement application.

These new models share the same great styling and reliability you have come to expect from Trane.



Innovative:

- Designed with the light commercial application in mind.

Flexibility:

- Convertible installation in either the CEILING or LOW WALL position.

Convenience:

- The convenience of a factory wired control ensures that the control will not become lost or misplaced.

Quality:

- All major components are individually inspected and tested, and every unit undergoes a run-test before shipping from the factory.

Reliability:

- The three minute time delay provides built-in protection against power interruptions and rapid compressor cycling which could harm the air conditioning unit.

Specifications: 220-240/1/50 or 200-240/1/60

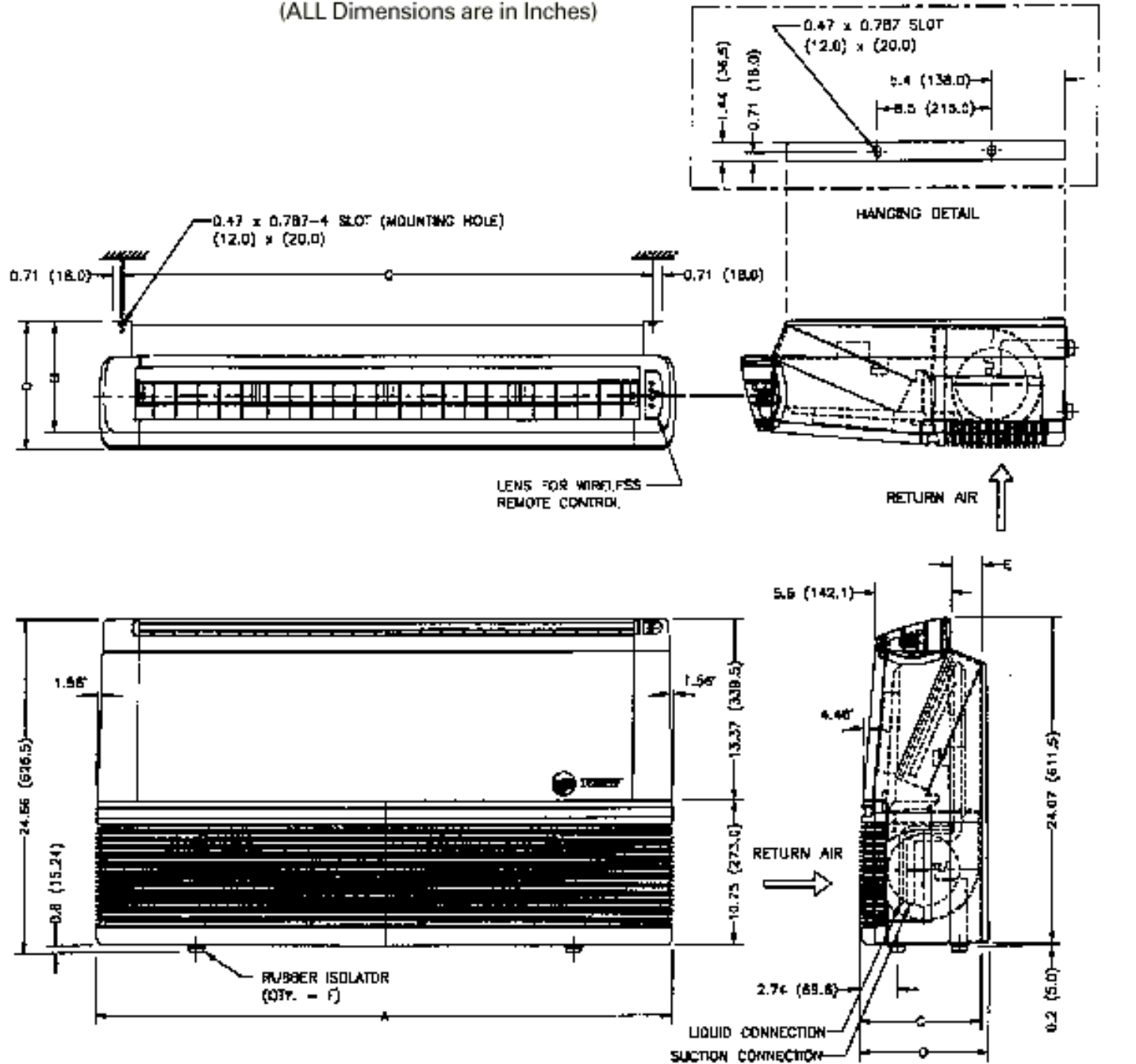
Model	Nominal Cooling Capacity		Airflow		Uncrated Dimensions						Weight	
	MBH	kW	CFM	CMH	Height		Width		Depth		lb	kg
					inches	mm	inches	mm	inches	mm		
MCX042E	42.0	12.3	1200	2039	24.1	612	72.2	1835	10.6	268	159	72
MCX048E	48.0	14.1	1200	2039	24.1	612	72.2	1835	10.6	268	165	75
MCX060E	60.0	17.6	1315	2234	24.1	612	82.1	2085	10.6	268	185	84

We recommend system matches with a Trane high efficiency condensing unit.

Dimensional Data

MCX512-536E

(ALL Dimensions are in Inches)



DIMENSIONAL DATA

MODEL	CONN. SIZES		A		B		C		D		E		F		G	
	LIQUID	SUCTION	IN.	(MM)	IN.	(MM)	IN.	(MM)	IN.	(MM)	IN.	(MM)	EACH	IN.	(MM)	
MCX512,518E	1/4 (6)	1/2 (13)	42.7	(1085.25)	8.2	(208.0)	9.0	(228.68)	9.6	(242.79)	2.3	(59.0)	4	39.3	(999.0)	
MCX524E	3/8 (10)	5/8 (16)	52.6	(1335.25)	9.2	(233.0)	10.0	(253.68)	10.5	(267.79)	3.3	(84.0)	4	49.2	(1249.0)	
MCX530E	3/8 (10)	5/8 (16)	62.4	(1585.25)	9.2	(233.0)	10.0	(253.68)	10.5	(267.79)	3.3	(84.0)	6	59.0	(1499.0)	
MCX536E	3/8 (10)	3/4 (19)	62.4	(1585.25)	9.2	(233.0)	10.0	(253.68)	10.5	(267.79)	3.3	(84.0)	6	59.0	(1499.0)	

General Data

Product Specifications

Indoor Units	MCX512EB0-G MCX512EBE-G(*)	MCX518EB0-G MCX518EBG-G(*)	MCX524EB0-G MCX524EBH-G(*)	MCX536EB0-F MCX536EBK-F(*)
Power Conn. - Volts/Ph/Hz	220-240/1/50	220-240/1/50	220-240/1/50	220-240/1/50
Fuse Size Max (amps)	Local Code	Local Code	Local Code	Local Code
Indoor Coil - Type	Plate Fin	Plate Fin	Plate Fin	Plate Fin
No. Rows	2	3	3	4
Fins per in (25.4 mm)	15	15	14	16
Coil Face Area (ft²) (m²)	2.1 (0.19)	2.1 (0.19)	2.8 (0.26)	3.45 (0.32)
Coil Tube Size (in)(mm)	³ / ₈ (9.5)	³ / ₈ (9.5)	³ / ₈ (9.5)	³ / ₈ (9.5)
Refrigerant Control	Capillary Tube	Capillary Tube	Capillary Tube	Capillary Tube
Drain Connections (in)(mm)	³ / ₄ (19)	³ / ₄ (19)	³ / ₄ (19)	³ / ₄ (19)
Indoor Fan - Type	Forward Curved Centrifugal			
Dia./Width-(in)	6x7	6x7	6x8	6x7
Dia./Width-(mm)	152x178	152x178	152x203	152x178
Qty. Used	2	2	2	4
Type Drive-No. Speeds	Direct-3	Direct-3	Direct-3	Direct-3
Air flow (Hi/Med/Lo)				
CFM @ 0.0 in. w.g.	400/350/300	475/400/325	675/505/400	915/685/615
CMH @ 0.0 mm w.g.	680/595/510	808/680/555	1148/858/680	1556/1164/1045
No. Motors (HP)-(KW)	1(1/25)-(0.030)	1(1/20)-(0.037)	1(1/12)-(0.062)	2(1/15)-(0.10)
Motor Speed (RPM)-(RPS)	1100-18.3	1250-20.8	1200-20.0	1350-22.5
Volts/Ph/Hz	220/1/50	220/1/50	220/1/50	220/1/50
R.L.Amps	0.37	0.42	0.60	2x0.58
L.R.Amps	0.49	0.65	0.86	2x1.02
Electric Heater Data (*)				
Heater Rating (KW)	2.0	3.0	4.0	6.0 (2 elements)
Heater R.L.Amps	9.1	13.6	18.2	27.2
MCA	11.9	17.5	23.5	35.5
Filters - Furnished	Yes	Yes	Yes	Yes
Quantity	3	3	3	4
Size (H x W x D)				
(in)	1-8.00 x 9.84 x 0.19	1-8.00 x 9.84 x 0.19	1-8.00 x 19.69 x 0.19	2-8.00 x 14.80 x 0.19
	2-8.00 x 14.06 x 0.19	2-8.00 x 14.06 x 0.19	2-8.00 x 14.06 x 0.19	2-8.00 x 14.06 x 0.19
(mm)	1-203 x 250 x 5	1-203 x 250 x 5	1-203 x 500 x 5	2-203 x 376 x 5
	2-203 x 357 x 5	2-203 x 357 x 5	2-203 x 357 x 5	2-203 x 357 x 5
Dimensions (H x W x D)				
Crated (in)	27.1 x 44.7 x 11.0	27.1 x 44.7 x 11.0	27.1 x 54.6 x 12.0	27.1 x 64.4 x 12.0
(mm)	687 x 1136 x 279	687 x 1136 x 279	687 x 1387 x 304	687 x 1636 x 304
Uncrated (in)	24.7 x 42.7 x 9.6	24.7 x 42.7 x 9.6	24.7 x 52.6 x 10.5	24.7 x 62.4 x 10.5
(mm)	627 x 1085 x 243	627 x 1085 x 243	627 x 1335 x 268	627 x 1585 x 268
Weight - Lbs. (Kg)				
Shipping-Crated				
Without Elec. Htr.	79 (36)	86 (39)	101 (46)	136 (62)
With Elec. Htr.	82 (37)	90 (41)	104 (47)	141 (64)
Net-Uncrated				

Without Elec. Htr.	73 (33)	79 (35)	90 (41)	125 (57)
With Elec. Htr.	75 (34)	82 (37)	93 (42)	130 (59)

11th Digit "F" = Models WITHOUT Air Sweep Feature 11th Digit "G" = Models WITH Air Sweep Feature

(*) Models with electric heaters have an alphabetic letter in the ninth digit, i.e., E, G, H, and K

MCA - Minimum Circuit Ampacity; calculated as follows: 125% of heater R.L. Amps plus the fan motor R.L. Amps.



General Data

TTB012C100A

OUTDOOR UNIT ①②	TTB012C100A
POWER CONNS. — V/PH/Hz ③	200/230/1/60
MIN. BRCH. CIR. AMPACITY	11
BR. CIR. } MAX. (AMPS)	15
PROT. RTG. } MIN. (AMPS)	15
NOISE RATING (DECIBELS) ②	82
COMPRESSOR	CLIMATUFF®
NO. USED - NO. SPEEDS	1 - 1
VOLTS/PH/Hz	200/230/1/60
R.L. AMPS ⑦ - L.R. AMPS	8.0 - 45
FACTORY INSTALLED	
START COMPONENTS ⑧	NO
INSULATION/SOUND BLANKET	NO
COMPRESSOR HEAT	NO
OUTDOOR FAN — TYPE	PROPELLER
DIA. (IN.) - NO. USED	13.7 - 1
TYPE DRIVE - NO. SPEEDS	DIRECT - 1
CFM @ 0.0 IN. W.G. ④	1600
NO. MOTORS - HP	1 - 1/6
MOTOR SPEED R.P.M.	1650
VOLTS/PH/Hz	200/230/1/60
F.L. AMPS	0.98
OUTDOOR COIL — TYPE	SPINE FIN™
ROWS - F.P.I.	1 - 24
FACE AREA (SQ. FT.)	6.62
TUBE SIZE (IN.)	3/8
REFRIGERANT	
LBS. — R-22 (O.D. UNIT) ⑤	2 LBS., 8 OZ.
FACTORY SUPPLIED	YES
LINE SIZE - IN. O.D. GAS ⑥	5/8
LINE SIZE - IN. O.D. LIQ. ⑥	1/4
FCCV	
RESTRICTOR ORIFICE SIZE	0.049
DIMENSIONS	
OUTDOOR UNIT - CRATED (IN.)	H X W X D 24-3/4 X 20 X 20
UNCRATED	SEE OUTLINE DWG.
WEIGHT	
SHIPPING (LBS.)	118
NET (LBS.)	112

① CERTIFIED IN ACCORDANCE WITH THE UNITARY AIR-CONDITIONER EQUIPMENT CERTIFICATION PROGRAM, WHICH IS BASED ON A.R.I. STANDARD 210/240.

② RATED IN ACCORDANCE WITH A.R.I. STANDARD 270.



SPLIT SYSTEM

- ③ CALCULATED IN ACCORDANCE WITH NATIONAL ELECTRIC CODE. ONLY USE HACR CIRCUIT BREAKERS OR FUSES.
- ④ STANDARD AIR - DRY COIL - OUTDOOR
- ⑤ THIS VALUE APPROXIMATE. FOR MORE PRECISE VALUE SEE UNIT NAMEPLATE AND SERVICE INSTRUCTION.
- ⑥ MAX. LINEAR LENGTH: 80 FT WITH RECIPROCATING COMPRESSOR - 60 FT WITH SCROLL. MAX. LIFT - SUCTION 60 FT; MAX LIFT - LIQUID 60 FT. FOR GREATER LENGTH REFER TO REFRIGERANT PIPING SOFTWARE PUB. NO. 32-3312-01.
- ⑦ THE VALUE SHOWN FOR COMPRESSOR RLA ON THE UNIT NAMEPLATE AND ON THIS SPECIFICATION SHEET IS USED TO COMPUTE MINIMUM BRANCH CIRCUIT AMPACITY AND MAXIMUM FUSE SIZE. THE VALUE SHOWN IS THE BRANCH CIRCUIT SELECTION CURRENT.
- ⑧ NO MEANS NO START COMPONENTS
YES MEANS QUICK START KIT COMPONENTS
PTC MEANS POSITIVE TEMPERATURE COEFFICIENT STARTER.



CONDENSING UNIT WITH COOLING COILS

	CCBA18A4AC	CUBA18A4AC	TXA018C4	TXA024C4	TXA025C4	TXC018C4	TXC024C4
EXPANSION TYPE	FIXED ORIFICE	FIXED ORIFICE	FACT INS 49	CHG TO 49	CHG TO 49	FACT INS 49	CHG TO 49
RATINGS (COOLING) ①							
BTUH (TOTAL)	15800	15800	14800	14400	14700	14800	14400
BTUH (SENSIBLE)	10000	10000	9600	9200	9600	9600	9200
INDOOR AIRFLOW (CFM)	450	450	525	450	450	525	450
SYSTEM POWER (KW)	1.73	1.73	1.61	1.55	1.56	1.61	1.55
SEER (BTU/WAT-FHR.)	10.00	10.00	10.00	10.00	10.05	10.00	10.00

	TXC024D4	TXC025C4	TXC025D4	TXH025A4
EXPANSION TYPE	CHG TO 49	CHG TO 49	CHG TO 49	CHG TO 49
RATINGS (COOLING) ①				
BTUH (TOTAL)	14400	14700	14700	16200
BTUH (SENSIBLE)	9200	9600	9600	10300
INDOOR AIRFLOW (CFM)	450	450	450	450
SYSTEM POWER (KW)	1.55	1.56	1.56	1.74
SEER (BTU/WAT-FHR.)	10.00	10.05	10.05	10.00

CONDENSING UNIT WITH AIR HANDLERS

	TVF018A14	TVF025A14	TWE018C14	TWE024C14	TWG018A14	TWG025A14
EXPANSION TYPE	FACT INS 49	CHG TO 49	FACT INS 49	CHG TO 49	FACT INS 49	CHG TO 49
RATINGS (COOLING) ①						
BTUH (TOTAL)	15100	14900	14600	14400	14500	14200
BTUH (SENSIBLE)	10100	9900	9300	9200	9400	9300
INDOOR AIRFLOW (CFM)	450	450	450	450	450	450
SYSTEM POWER (KW)	1.56	1.62	1.56	1.55	1.56	1.49
SEER (BTU/WAT-FHR.)	10.50	10.00	10.20	10.20	10.00	10.00

*See page 21 for combinations with Auxiliary Devices.



General Data

TTB018C100A

OUTDOOR UNIT ①②	TTB018C100A
POWER CONNS. — V/PH/Hz ③	200/230/1/60
MIN. BRCH. CIR. AMPACITY	11
BR. CIR. } MAX. (AMPS)	15
PROT. RTG. } MIN. (AMPS)	15
NOISE RATING (DECIBELS) ②	82
COMPRESSOR	CLIMATUFF®
NO. USED - NO. SPEEDS	1 - 1
VOLTS/PH/Hz	200/230/1/60
R.L. AMPS ⑦ - L.R. AMPS	8.0 - 45
FACTORY INSTALLED	
START COMPONENTS ⑧	NO
INSULATION/SOUND BLANKET	NO
COMPRESSOR HEAT	NO
OUTDOOR FAN — TYPE	PROPELLER
DIA. (IN.) - NO. USED	13.7 - 1
TYPE DRIVE - NO. SPEEDS	DIRECT - 1
CFM @ 0.0 IN. W.G. ④	1600
NO. MOTORS - HP	1 - 1/6
MOTOR SPEED R.P.M.	1650
VOLTS/PH/Hz	200/230/1/60
F.L. AMPS	0.98
OUTDOOR COIL — TYPE	SPINE FIN™
ROWS - F.P.I.	1 - 24
FACE AREA (SQ. FT.)	6.62
TUBE SIZE (IN.)	3/8
REFRIGERANT	
LBS. — R-22 (O.D. UNIT) ⑤	2 LBS., 15 OZ.
FACTORY SUPPLIED	YES
LINE SIZE - IN. O.D. GAS ⑥	5/8
LINE SIZE - IN. O.D. LIQ. ⑥	1/4
FCCV	
RESTRICTOR ORIFICE SIZE	0.049
DIMENSIONS	
OUTDOOR UNIT - CRATED (IN.)	H X W X D 24 3/4 X 20 X 20
UNCRATED	SEE OUTLINE DWG.
WEIGHT	
SHIPPING (LBS.)	118
NET (LBS.)	112

① CERTIFIED IN ACCORDANCE WITH THE UNITARY AIR-CONDITIONER EQUIPMENT CERTIFICATION PROGRAM, WHICH IS BASED ON A.R.I. STANDARD 210/240.

② RATED IN ACCORDANCE WITH A.R.I. STANDARD 270.



SPLIT SYSTEM

③ CALCULATED IN ACCORDANCE WITH NATIONAL ELECTRIC CODE. ONLY USE HACR CIRCUIT BREAKERS OR FUSES.

④ STANDARD AIR - DRY COIL - OUTDOOR

⑤ THIS VALUE APPROXIMATE. FOR MORE PRECISE VALUE SEE UNIT NAMEPLATE AND SERVICE INSTRUCTION.

⑥ MAX. LINEAR LENGTH: 80 FT WITH RECIPROCATING COMPRESSOR - 60 FT WITH SCROLL. MAX. LIFT - SUCTION 60 FT; MAX LIFT - LIQUID 60 FT. FOR GREATER LENGTH REFER TO REFRIGERANT PIPING SOFTWARE PUB. NO. 32-3312-01.

⑦ THE VALUE SHOWN FOR COMPRESSOR RLA ON THE UNIT NAMEPLATE AND ON THIS SPECIFICATION SHEET IS USED TO COMPUTE MINIMUM BRANCH CIRCUIT AMPACITY AND MAXIMUM FUSE SIZE. THE VALUE SHOWN IS THE BRANCH CIRCUIT SELECTION CURRENT.

⑧ NO MEANS NO START COMPONENTS
YES MEANS QUICK START KIT COMPONENTS
PTC MEANS POSITIVE TEMPERATURE COEFFICIENT STARTER.



CONDENSING UNIT WITH COOLING COILS

	CCBA18A4AC	CCBA24A4AC	CUBA18A4AC	CUBA24A4AC	CUBB24A4AC	TXA018C4	TXA024C4
EXPANSION TYPE	FIXED ORIFICE	FIXED ORIFICE	FIXED ORIFICE	FIXED ORIFICE	FIXED ORIFICE	FACT INS 49	CHG TO 49
RATINGS (COOLING) ①							
BTUH (TOTAL)	16600	16600	16600	16600	16600	17000	16800
BTUH (SENSIBLE)	11100	11500	11100	11500	11500	11400	11600
INDOOR AIRFLOW (CFM)	600	620	600	620	620	600	630
SYSTEM POWER (KW)	1.80	1.79	1.80	1.79	1.79	1.82	1.81
SEER (BTU/WAT·HR.)	10.00	10.10	10.00	10.10	10.10	10.00	10.05

	TXA025C4	TXC018C4	TXC024C4	TXC024D4	TXC025C4	TXC025D4	TXH025A4
EXPANSION TYPE	CHG TO 49	FACT INS 49	CHG TO 49	CHG TO 49	CHG TO 49	CHG TO 49	CHG TO 49
RATINGS (COOLING) ①							
BTUH (TOTAL)	17100	16600	16800	16800	17100	17100	17200
BTUH (SENSIBLE)	12700	11100	11600	11600	12700	12700	11900
INDOOR AIRFLOW (CFM)	640	600	630	630	640	640	640
SYSTEM POWER (KW)	1.83	1.80	1.81	1.81	1.83	1.83	1.85
SEER (BTU/WAT·HR.)	10.00	10.00	10.05	10.05	10.00	10.00	10.00

CONDENSING UNIT WITH AIR HANDLERS

	TVF018A14	TVF024A14	TVF025A14	TWE018C14	TWE024C14	TWG018A14	TWG025A14
EXPANSION TYPE	FACT INS 49	CHG TO 49	CHG TO 49	FACT INS 49	CHG TO 49	FACT INS 49	CHG TO 49
RATINGS (COOLING) ①							
BTUH (TOTAL)	17300	17400	17500	17100	16800	16500	16600
BTUH (SENSIBLE)	12700	13300	13400	11600	11600	11400	12100
INDOOR AIRFLOW (CFM)	600	650	655	600	625	600	620
SYSTEM POWER (KW)	1.78	1.86	1.83	1.77	1.79	1.77	1.74
SEER (BTU/WAT·HR.)	10.40	10.15	10.40	10.00	10.00	10.00	10.00

*See page 21 for combinations with Auxiliary Devices.

General Data

TTB024C100A

OUTDOOR UNIT ①②	TTB024C100A
POWER CONNS. — V/PH/Hz ③	208/230/1/60
MIN. BRCH. CIR. AMPACITY	15
BR. CIR. } MAX. (AMPS)	25
PROT. RTG. } MIN. (AMPS)	20
NOISE RATING (DECIBELS) ②	80
COMPRESSOR	CLIMATUFF®
NO. USED - NO. SPEEDS	1 - 1
VOLTS/PH/Hz	200/230/1/60
R.L. AMPS ⑦ - L.R. AMPS	11.6 - 60
FACTORY INSTALLED	
START COMPONENTS ⑧	NO
INSULATION/SOUND BLANKET	NO
COMPRESSOR HEAT	NO
OUTDOOR FAN — TYPE	PROPELLER
DIA. (IN.) - NO. USED	13.7 - 1
TYPE DRIVE - NO. SPEEDS	DIRECT - 1
CFM @ 0.0 IN. W.G. ④	1550
NO. MOTORS - HP	1 - 1/6
MOTOR SPEED R.P.M.	1650
VOLTS/PH/Hz	200/230/1/60
F.L. AMPS	0.98
OUTDOOR COIL — TYPE	SPINE FIN™
ROWS - F.P.I.	1 - 24
FACE AREA (SQ. FT.)	6.62
TUBE SIZE (IN.)	3/8
REFRIGERANT	
LBS. — R-22 (O.D. UNIT) ⑤	3 LBS., 6 OZ.
FACTORY SUPPLIED	YES
LINE SIZE - IN. O.D. GAS ⑥	3/4
LINE SIZE - IN. O.D. LIQ. ⑥	5/16
FCCV	
RESTRICTOR ORIFICE SIZE	0.057
DIMENSIONS	
OUTDOOR UNIT - CRATED (IN.)	H X W X D 24-3/4 X 20 X 20
UNCRATED	SEE OUTLINE DWG.
WEIGHT	
SHIPPING (LBS.)	130
NET (LBS.)	125

① CERTIFIED IN ACCORDANCE WITH THE UNITARY AIR-CONDITIONER EQUIPMENT CERTIFICATION PROGRAM, WHICH IS BASED ON A.R.I. STANDARD 210/240.

② RATED IN ACCORDANCE WITH A.R.I. STANDARD 270.



SPLIT SYSTEM

- ③ CALCULATED IN ACCORDANCE WITH NATIONAL ELECTRIC CODE. ONLY USE HACR CIRCUIT BREAKERS OR FUSES.
- ④ STANDARD AIR - DRY COIL - OUTDOOR
- ⑤ THIS VALUE APPROXIMATE. FOR MORE PRECISE VALUE SEE UNIT NAMEPLATE AND SERVICE INSTRUCTION.
- ⑥ MAX. LINEAR LENGTH: 80 FT WITH RECIPROCATING COMPRESSOR - 60 FT WITH SCROLL. MAX. LIFT - SUCTION 60 FT; MAX LIFT - LIQUID 60 FT. FOR GREATER LENGTH REFER TO REFRIGERANT PIPING SOFTWARE PUB. NO. 32-3312-01.
- ⑦ THE VALUE SHOWN FOR COMPRESSOR RLA ON THE UNIT NAMEPLATE AND ON THIS SPECIFICATION SHEET IS USED TO COMPUTE MINIMUM BRANCH CIRCUIT AMPACITY AND MAXIMUM FUSE SIZE. THE VALUE SHOWN IS THE BRANCH CIRCUIT SELECTION CURRENT.
- ⑧ NO MEANS NO START COMPONENTS
YES MEANS QUICK START KIT COMPONENTS
PTC MEANS POSITIVE TEMPERATURE COEFFICIENT STARTER.



CONDENSING UNIT WITH COOLING COILS

	CCBA24A4AC	CCBA30A4AC	CCBB30A4AC	CUBA24A4AC	CUBA30A4AC	CUBB24A4AC	CUBB30A4AC
EXPANSION TYPE	FIXED ORIFICE	FIXED ORIFICE	FIXED ORIFICE	FIXED ORIFICE	FIXED ORIFICE	FIXED ORIFICE	FIXED ORIFICE
RATINGS (COOLING) ①							
BTUH (TOTAL)	22000	21200	22000	22000	21200	22000	22000
BTUH (SENSIBLE)	14900	14500	16300	14900	14500	14900	16300
INDOOR AIRFLOW (CFM)	800	775	800	800	775	800	800
SYSTEM POWER (KW)	2.40	2.36	2.39	2.40	2.36	2.40	2.39
SEER (BTU/WAT-HR.)	10.00	10.00	10.00	10.00	10.00	10.00	10.00

	TXA024C4	TXA025C4	TXA030C4	TXA031C4	TXA035C4	TXA036C4	TXA037C4
EXPANSION TYPE	FACT INS 57	FACT INS 57	CHG TO 57	CHG TO 57	CHG TO 57	CHG TO 57	CHG TO 57
RATINGS (COOLING) ①							
BTUH (TOTAL)	22200	21800	22200	22400	22000	22800	22800
BTUH (SENSIBLE)	15000	15500	15500	16400	15200	16900	16900
INDOOR AIRFLOW (CFM)	800	800	825	835	825	850	850
SYSTEM POWER (KW)	2.44	2.37	2.40	2.41	2.37	2.43	2.43
SEER (BTU/WAT-HR.)	10.00	10.00	10.00	10.00	10.00	10.00	10.00

	TXC024C4	TXC024D4	TXC025C4	TXC025D4	TXC030C4	TXC030D4	TXC031C4
EXPANSION TYPE	FACT INS 57	FACT INS 57	FACT INS 57	FACT INS 57	CHG TO 57	CHG TO 57	CHG TO 57
RATINGS (COOLING) ①							
BTUH (TOTAL)	21400	21400	21800	21800	22200	22200	22400
BTUH (SENSIBLE)	14500	14500	15500	15500	15500	15500	16400
INDOOR AIRFLOW (CFM)	800	800	800	800	825	825	835
SYSTEM POWER (KW)	2.34	2.34	2.37	2.37	2.40	2.40	2.41
SEER (BTU/WAT-HR.)	10.00	10.00	10.00	10.00	10.00	10.00	10.00

*See page 21 for combinations with Auxiliary Devices.



General Data

TTB030C100A

OUTDOOR UNIT ①②	TTB030C100A
POWER CONNS. — V/PH/Hz ③	200/230/1/60
MIN. BRCH. CIR. AMPACITY	18
BR. CIR. } MAX. (AMPS)	30
PROT. RTG. } MIN. (AMPS)	30
NOISE RATING (DECIBELS) ②	78
COMPRESSOR	CLIMATUFF®
NO. USED - NO. SPEEDS	1 - 1
VOLTS/PH/Hz	200/230/1/60
R.L. AMPS ⑦ - L.R. AMPS	13.0 - 75
FACTORY INSTALLED	
START COMPONENTS ⑧	NO
INSULATION/SOUND BLANKET	NO
COMPRESSOR HEAT	NO
OUTDOOR FAN — TYPE	PROPELLER
DIA. (IN.) - NO. USED	18 - 1
TYPE DRIVE - NO. SPEEDS	DIRECT - 1
CFM @ 0.0 IN. W.G. ④	2450
NO. MOTORS - HP	1 - 1/4
MOTOR SPEED R.P.M.	1075
VOLTS/PH/Hz	200/230/1/60
F.L. AMPS	1.30
OUTDOOR COIL — TYPE	SPINE FIN™
ROWS - F.P.I.	1 - 24
FACE AREA (SQ. FT.)	10.96
TUBE SIZE (IN.)	3/8
REFRIGERANT	
LBS. — R-22 (O.D. UNIT) ⑤	4 LBS., 2 OZ.
FACTORY SUPPLIED	YES
LINE SIZE - IN. O.D. GAS ⑥	3/4
LINE SIZE - IN. O.D. LIQ. ⑥	5/16
FCCV	
RESTRICTOR ORIFICE SIZE	0.065
DIMENSIONS	H X W X D
OUTDOOR UNIT - CRATED (IN.)	27-3/8 X 26-7/8 X 26-7/8
UNCRATED	SEE OUTLINE DWG.
WEIGHT	
SHIPPING (LBS.)	180
NET (LBS.)	166

① CERTIFIED IN ACCORDANCE WITH THE UNITARY AIR-CONDITIONER EQUIPMENT CERTIFICATION PROGRAM, WHICH IS BASED ON A.R.I. STANDARD 210/240.

② RATED IN ACCORDANCE WITH A.R.I. STANDARD 270.



SPLIT SYSTEM

- ③ CALCULATED IN ACCORDANCE WITH NATIONAL ELECTRIC CODE. ONLY USE HACR CIRCUIT BREAKERS OR FUSES.
- ④ STANDARD AIR - DRY COIL - OUTDOOR
- ⑤ THIS VALUE APPROXIMATE. FOR MORE PRECISE VALUE SEE UNIT NAMEPLATE AND SERVICE INSTRUCTION.
- ⑥ MAX. LINEAR LENGTH: 80 FT WITH RECIPROCATING COMPRESSOR - 60 FT WITH SCROLL. MAX. LIFT - SUCTION 60 FT; MAX LIFT - LIQUID 60 FT. FOR GREATER LENGTH REFER TO REFRIGERANT PIPING SOFTWARE PUB. NO. 32-3312-01.
- ⑦ THE VALUE SHOWN FOR COMPRESSOR RLA ON THE UNIT NAMEPLATE AND ON THIS SPECIFICATION SHEET IS USED TO COMPUTE MINIMUM BRANCH CIRCUIT AMPACITY AND MAXIMUM FUSE SIZE. THE VALUE SHOWN IS THE BRANCH CIRCUIT SELECTION CURRENT.
- ⑧ NO MEANS NO START COMPONENTS
YES MEANS QUICK START KIT COMPONENTS
PTC MEANS POSITIVE TEMPERATURE COEFFICIENT STARTER.



CONDENSING UNIT WITH COOLING COILS

	CCBA30A44C	CCBA36A44C	CCBB30A44C	CCBB36A44C	CUBA30A44C	CUBA36A44C	CUBB30A44C
EXPANSION TYPE	FIXED ORIFICE	FIXED ORIFICE	FIXED ORIFICE	FIXED ORIFICE	FIXED ORIFICE	FIXED ORIFICE	FIXED ORIFICE
RATINGS (COOLING) ①							
BTUH (TOTAL)	26600	27400	27800	27600	26600	27400	27800
BTUH (SENSIBLE)	17300	18600	19500	19800	17300	18600	19500
INDOOR AIRFLOW (CFM)	950	1025	1000	1035	950	1025	1000
SYSTEM POWER (KW)	2.89	2.96	2.96	2.97	2.89	2.96	2.96
SEER (BTU/WAT-HR.)	10.00	10.00	10.05	10.00	10.00	10.00	10.05

	CUBB36A44C	CUBC36A44C	TXA024C4	TXA025C4	TXA030C4	TXA031C4	TXA035C4
EXPANSION TYPE	FIXED ORIFICE	FIXED ORIFICE	CHG TO 65	CHG TO 65	CHG TO 65	CHG TO 65	CHG TO 65
RATINGS (COOLING) ①							
BTUH (TOTAL)	27600	27600	26600	27000	27800	28200	28200
BTUH (SENSIBLE)	19800	19800	17100	18100	18500	19700	19300
INDOOR AIRFLOW (CFM)	1035	1035	900	900	1000	1000	1055
SYSTEM POWER (KW)	2.97	2.97	2.88	2.89	2.97	3.08	3.03
SEER (BTU/WAT-HR.)	10.00	10.00	10.00	10.00	10.05	10.00	10.00

	TXA036C4	TXA037C4	TXA042C4	TXA043C4	TXC024C4	TXC024D4	TXC025C4
EXPANSION TYPE	CHG TO 65	CHG TO 65	CHG TO 65	CHG TO 65	CHG TO 65	CHG TO 65	CHG TO 65
RATINGS (COOLING) ①							
BTUH (TOTAL)	29000	29000	29200	29200	26600	26600	27000
BTUH (SENSIBLE)	21200	21200	21400	21400	17100	17100	18100
INDOOR AIRFLOW (CFM)	1085	1085	1095	1095	900	900	900
SYSTEM POWER (KW)	3.07	3.07	3.07	3.07	2.88	2.88	2.89
SEER (BTU/WAT-HR.)	10.05	10.05	10.10	10.10	10.00	10.00	10.00

*See pages 21 and 22 for combinations with Auxiliary Devices.

General Data

TTB036C100A

OUTDOOR UNIT ①②	TTB036C100A
POWER CONNS. — V/PH/HZ ③	200/230/1/60
MIN. BRCH. CIR. AMPACITY	22
BR. CIR. } MAX. (AMPS)	35
PROT. RTG. } MIN. (AMPS)	35
NOISE RATING (DECIBELS) ②	78
COMPRESSOR	CLIMATUFF®
NO. USED - NO. SPEEDS	1 - 1
VOLTS/PH/HZ	200/230/1/60
R.L. AMPS ⑦ - L.R. AMPS	16.0 - 88
FACTORY INSTALLED	
START COMPONENTS ⑧	NO
INSULATION/SOUND BLANKET	NO
COMPRESSOR HEAT	NO
OUTDOOR FAN — TYPE	PROPELLER
DIA. (IN.) - NO. USED	18 - 1
TYPE DRIVE - NO. SPEEDS	DIRECT - 1
CFM @ 0.0 IN. W.G. ④	3000
NO. MOTORS - HP	1 - 1/4
MOTOR SPEED R.P.M.	1075
VOLTS/PH/HZ	200/230/1/60
F.L. AMPS	1.30
OUTDOOR COIL — TYPE	SPINE FIN™
ROWS - F.P.I.	1 - 24
FACE AREA (SQ. FT.)	14.93
TUBE SIZE (IN.)	3/8
REFRIGERANT	
LBS. — R-22 (O.D. UNIT) ⑤	5 LBS., 10 OZ.
FACTORY SUPPLIED	YES
LINE SIZE - IN. O.D. GAS ⑥	7/8
LINE SIZE - IN. O.D. LIQ. ⑥	3/8
FCCV	
RESTRICTOR ORIFICE SIZE	0.071
DIMENSIONS	H X W X D
OUTDOOR UNIT - CRATED (IN.)	34-3/8 X 26-7/8 X 26-7/8
UNCRATED	SEE OUTLINE DWG.
WEIGHT	
SHIPPING (LBS.)	188
NET (LBS.)	174

① CERTIFIED IN ACCORDANCE WITH THE UNITARY AIR-CONDITIONER EQUIPMENT CERTIFICATION PROGRAM, WHICH IS BASED ON A.R.I. STANDARD 210/240.

② RATED IN ACCORDANCE WITH A.R.I. STANDARD 270.



SPLIT SYSTEM

- ③ CALCULATED IN ACCORDANCE WITH NATIONAL ELECTRIC CODE. ONLY USE HACR CIRCUIT BREAKERS OR FUSES.
- ④ STANDARD AIR - DRY COIL - OUTDOOR
- ⑤ THIS VALUE APPROXIMATE. FOR MORE PRECISE VALUE SEE UNIT NAMEPLATE AND SERVICE INSTRUCTION.
- ⑥ MAX. LINEAR LENGTH: 80 FT WITH RECIPROCATING COMPRESSOR - 60 FT WITH SCROLL. MAX. LIFT - SUCTION 60 FT; MAX LIFT - LIQUID 60 FT. FOR GREATER LENGTH REFER TO REFRIGERANT PIPING SOFTWARE PUB. NO. 32-3312-01.
- ⑦ THE VALUE SHOWN FOR COMPRESSOR RLA ON THE UNIT NAMEPLATE AND ON THIS SPECIFICATION SHEET IS USED TO COMPUTE MINIMUM BRANCH CIRCUIT AMPACITY AND MAXIMUM FUSE SIZE. THE VALUE SHOWN IS THE BRANCH CIRCUIT SELECTION CURRENT.
- ⑧ NO MEANS NO START COMPONENTS
YES MEANS QUICK START KIT COMPONENTS
PTC MEANS POSITIVE TEMPERATURE COEFFICIENT STARTER.



CONDENSING UNIT WITH COOLING COILS

	CCBA36A4AC	CCBB36A4AC	CCBB42A4AC	CUBA36A4AC	CUBB36A4AC	CUBB42A4AC	CUBC36A4AC
EXPANSION TYPE	FIXED ORIFICE	FIXED ORIFICE	FIXED ORIFICE	FIXED ORIFICE	FIXED ORIFICE	FIXED ORIFICE	FIXED ORIFICE
RATINGS (COOLING) ①							
BTUH (TOTAL)	31600	31800	32000	31600	31800	32000	31800
BTUH (SENSIBLE)	20500	21400	22600	20500	21400	22600	21400
INDOOR AIRFLOW (CFM)	1100	1100	1200	1100	1100	1200	1100
SYSTEM POWER (KW)	3.31	3.31	3.35	3.31	3.31	3.35	3.31
SEER (BTU/WAT-HR.)	10.00	10.00	10.00	10.00	10.00	10.00	10.00

	CUBC42A4AC	TXA030C4	TXA031C4	TXA035C4	TXA036C4	TXA037C4	TXA042C4
EXPANSION TYPE	FIXED ORIFICE	CHG TO 71	CHG TO 71	FACT INS 71	FACT INS 71	FACT INS 71	CHG TO 71
RATINGS (COOLING) ①							
BTUH (TOTAL)	32000	31600	31800	31600	34000	34000	33400
BTUH (SENSIBLE)	22600	20500	21400	20500	23700	23700	23600
INDOOR AIRFLOW (CFM)	1200	1100	1100	1100	1200	1200	1250
SYSTEM POWER (KW)	3.35	3.31	3.31	3.31	3.51	3.51	3.44
SEER (BTU/WAT-HR.)	10.00	10.00	10.00	10.00	10.00	10.00	10.00

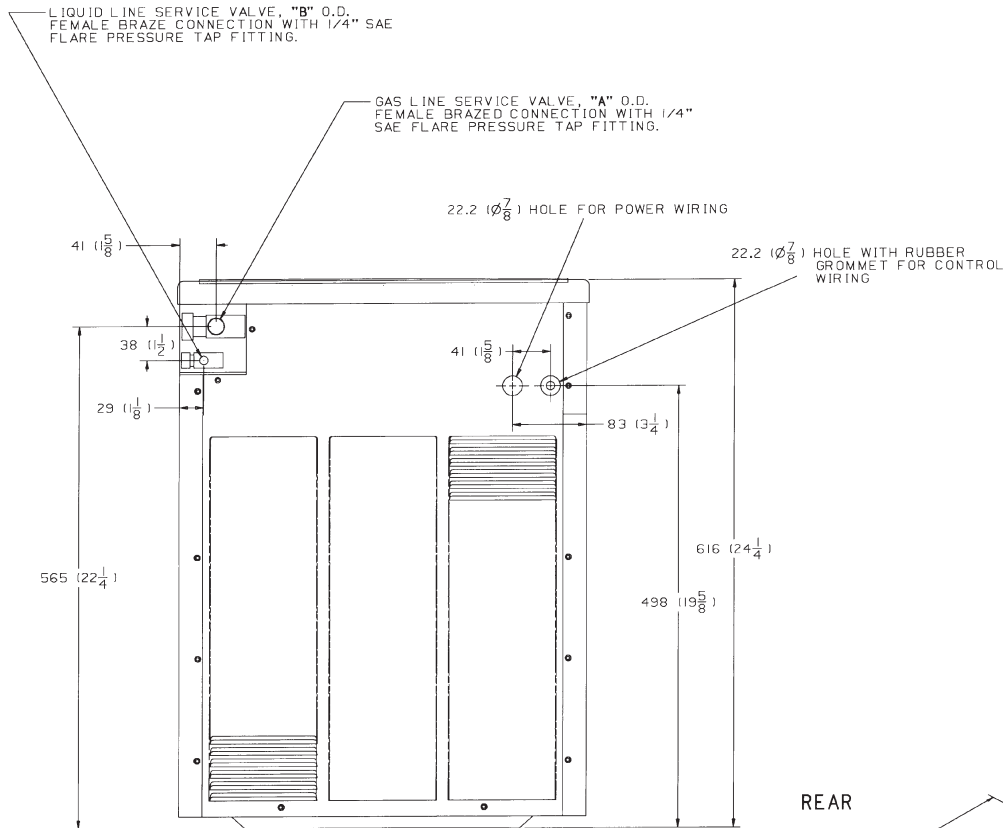
	TXA043C4	TXA048C4	TXA049C4	TXA050C4	TXC030C4	TXC030D4	TXC031C4
EXPANSION TYPE	CHG TO 71	CHG TO 71	CHG TO 71	CHG TO 71	CHG TO 71	CHG TO 71	CHG TO 71
RATINGS (COOLING) ①							
BTUH (TOTAL)	33600	34200	34200	34200	31600	31600	31800
BTUH (SENSIBLE)	24300	25200	25200	25200	20500	20500	21400
INDOOR AIRFLOW (CFM)	1260	1280	1280	1280	1100	1100	1100
SYSTEM POWER (KW)	3.48	3.51	3.51	3.51	3.31	3.31	3.31
SEER (BTU/WAT-HR.)	10.00	10.00	10.00	10.00	10.00	10.00	10.00

*See page 22 for combinations with Auxiliary Devices.

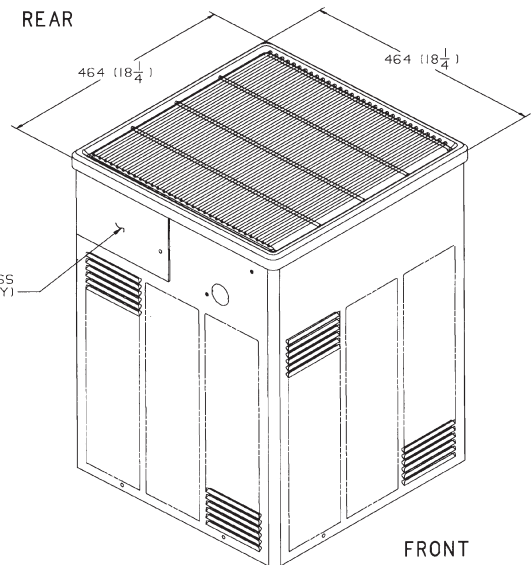
Dimensions

TTB012-024 OUTLINE DRAWING

NOTE: ALL DIMENSIONS ARE IN MM (INCHES)



REAR VIEW



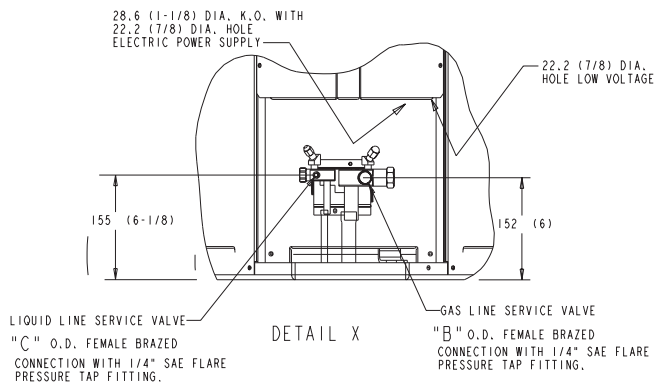
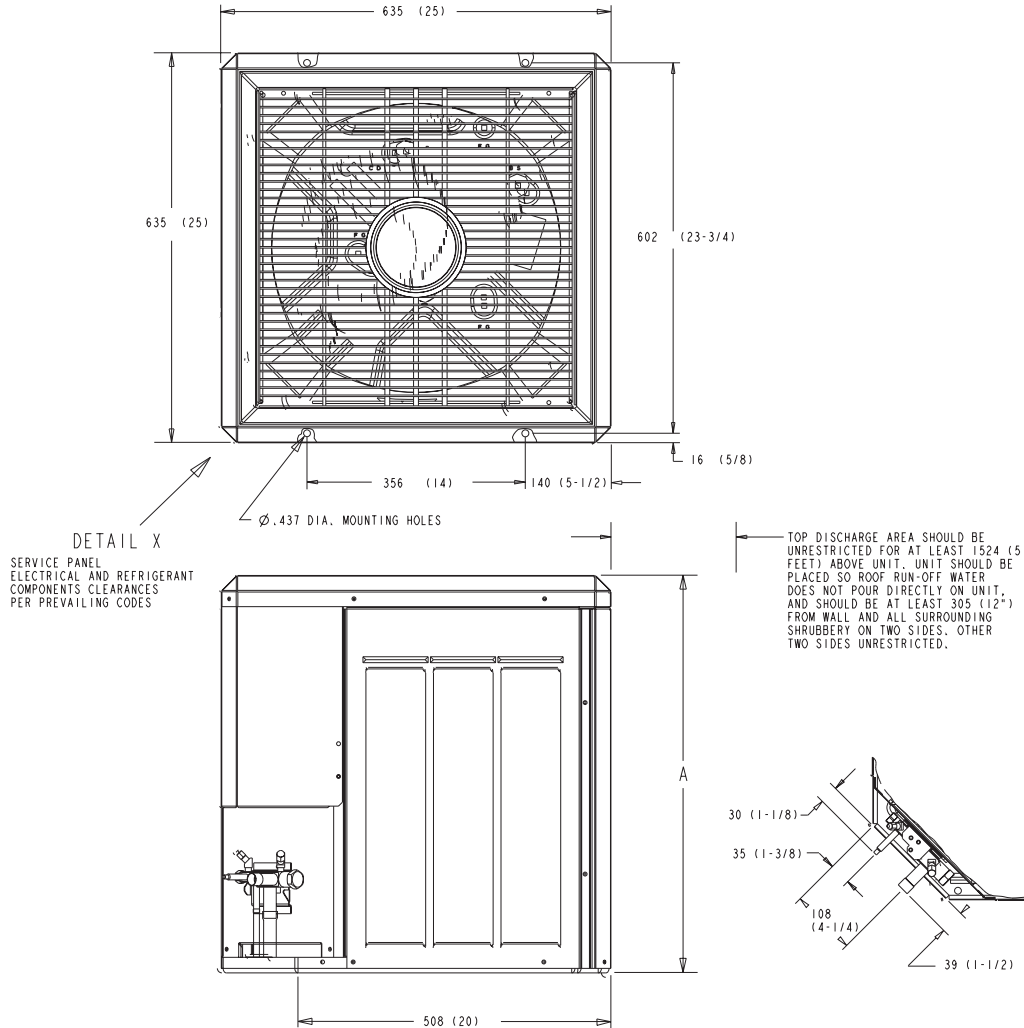
MODEL	A	B
TTB012C	5/8	1/4
TTB018C	5/8	1/4
TTB024C	3/4	5/16

NOTE: TABLE IN INCHES ONLY.

Dimensions

TTB030-048 OUTLINE DRAWING

NOTE: ALL DIMENSIONS ARE IN MM (INCHES)



MODEL	A	B	C
TTB030C	648 (25 1/2)	3/4	5/16
TTB036C	826 (32 1/2)	7/8	3/8
TTB042D	826 (32 1/2)	7/8	3/8
TTB048D	826 (32 1/2)	1 1/8	3/8